

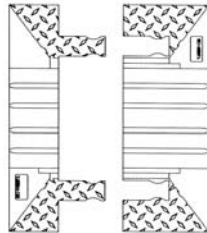


YELLOW JACKET[®] CLASSIC

ACCESSORIES



YJ5-125



End Boots

End boots reduce trip hazards by covering the exposed connectors and providing a smooth even end to the cable protectors. End boots attach to the exposed ends of the cable protectors at each end of the cable run.



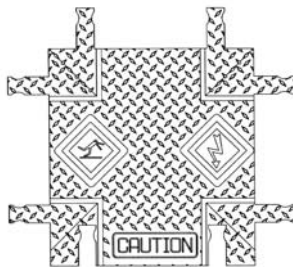
Left Turn

Each left turn piece allows a 45° change in direction of the cable run. Multiple left turns may be used in combination to produce a 90° or greater change in direction of the cable run. Turn pieces connect directly to the end of the cable protectors.



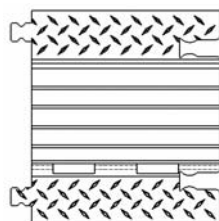
Right Turn

Each right turn piece allows a 45° change in direction of the cable run. Multiple right turns may be used in combination to produce a 90° or greater change in direction of the cable run. Turn pieces connect directly to the end of the cable protectors.



X Intersections

X Intersections permit 2 opposing cable runs to meet and continue on or split a single cable run into 3 directions while enclosing all of the cables in all runs. X Intersections connect directly to the end of the cable protectors.



YELLOW JACKET. AMS[™] Interconnect[™]

Interconnects are half length (18"), 5 channel cable protectors with a dog bone connector (*also available with T-bone connector*) on one end and an Hour Glass[™] connector on the other end. This cable protector interfaces the Yellow Jacket[®] Classic (YJ5-125) to **YELLOW JACKET. AMS[™]** and **WASP[™]. AMS[™]**. These connections require 2 **YELLOW JACKET. AMS[™]** Interconnects. All channels are 1.25" in diameter.

Drawings are representational and are not necessarily to scale.

YELLOW JACKET
CABLE PROTECTORS

A Division of Peterson
Systems International, Inc.

Tel 626.357.7051

Fax 626.303.3066

Email sales@yjams.com

P.O. Box 1557
2350 East Central Ave.
Duarte, CA 91010-2984

www.yjams.com

GSA Contract Holder

Contract #: GS07F5675P
Cage Code: 5K812

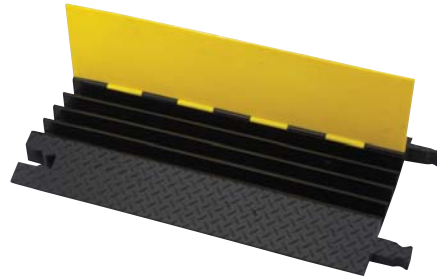


MADE IN USA



YELLOW JACKET[®] CLASSIC

ACCESSORIES



YJ4-125

YELLOW JACKET
CABLE PROTECTORS

A Division of Peterson
Systems International, Inc.

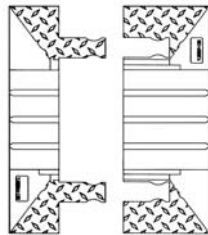
Tel 626.357.7051

Fax 626.303.3066

Email sales@yjams.com

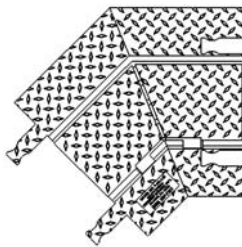
P.O. Box 1557
2350 East Central Ave.
Duarte, CA 91010-2984

www.yjams.com



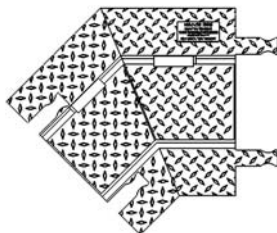
End Boots

End boots reduce trip hazards by covering the exposed connectors and providing a smooth even end to the cable protectors. End boots attach to the exposed ends of the cable protectors at each end of the cable run.



Left Turn

Each left turn piece allows a 45° change in direction of the cable run. Multiple left turns may be used in combination to produce a 90° or greater change in direction of the cable run. Turn pieces connect directly to the end of the cable protectors.



Right Turn

Each right turn piece allows a 45° change in direction of the cable run. Multiple right turns may be used in combination to produce a 90° or greater change in direction of the cable run. Turn pieces connect directly to the end of the cable protectors.

GSA Contract Holder

Contract #: GS07F5675P
Cage Code: 5K812



MADE IN USA

Drawings are representational and are not necessarily to scale.



YELLOW JACKET[®] CLASSIC

ACCESSORIES



YJ3-225

YELLOW JACKET
CABLE PROTECTORS

A Division of Peterson
Systems International, Inc.

Tel 626.357.7051

Fax 626.303.3066

Email sales@yjams.com

P.O. Box 1557
2350 East Central Ave.
Duarte, CA 91010-2984

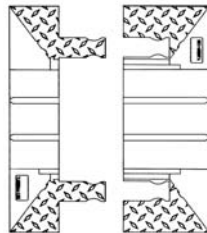
www.yjams.com

GSA Contract Holder

Contract #: GS07F5675P
Cage Code: 5K812

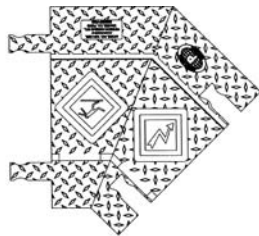


MADE IN USA



End Boots

End boots reduce trip hazards by covering the exposed connectors and providing a smooth even end to the cable protectors. End boots attach to the exposed ends of the cable protectors at each end of the cable run.



Left Turn

Each left turn piece allows a 45° change in direction of the cable run. Multiple left turns may be used in combination to produce a 90° or greater change in direction of the cable run. Turn pieces connect directly to the end of the cable protectors.



Right Turn

Each right turn piece allows a 45° change in direction of the cable run. Multiple right turns may be used in combination to produce a 90° or greater change in direction of the cable run. Turn pieces connect directly to the end of the cable protectors.

Drawings are representational and are not necessarily to scale.