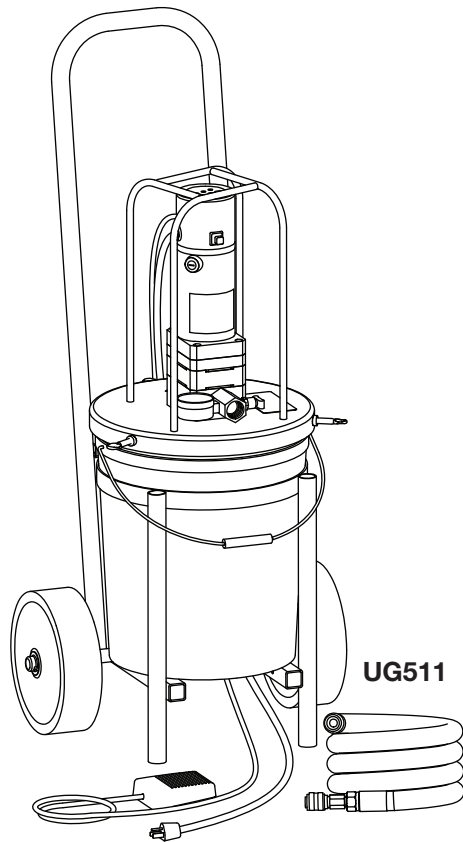


INSTRUCTION MANUAL

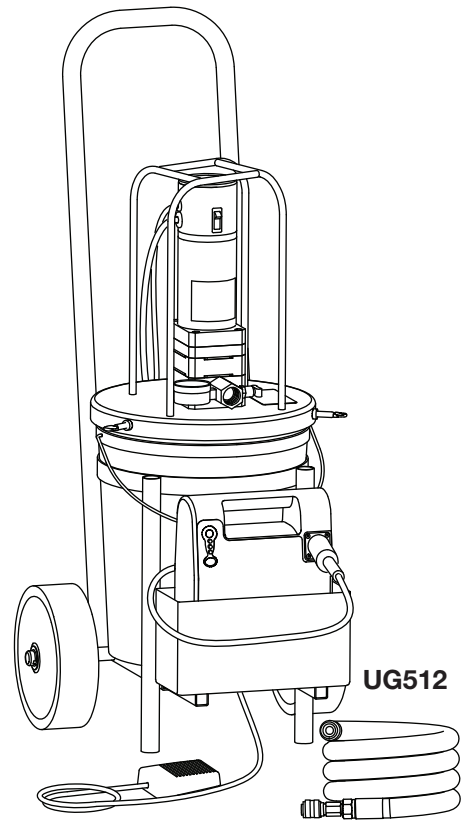


GREENLEE®

A Textron Company



UG511



UG512

ULTRA GLIDER™ UG5 **Cable Lubrication System**



Read and understand all of the instructions and safety information in this manual before operating or servicing this tool.

Table of Contents

Description	2
Safety	2
Purpose of this Manual	2
Important Safety Information	3-4
Specifications	5
Setup	5-6
Attaching the Hose	5
Setting Up the Pump	5
Priming the Pump	5
Selecting and Attaching Applicators	6
Operation.....	7
Maintenance.....	7
Cleanup.....	7
Battery	7
Illustrations	8-9
Parts List	10-11

Description

The Greenlee ULTRA GLIDER™ UG5 Cable Lubrication System is intended to apply cable pulling lubricant during cable installation. It consists of a pump unit, lubricant applicators, and a dolly.

- The pump unit of the UG511 has a 120 volt motor that plugs into a 15 amp circuit.
- The pump unit of the UG512 has a 12 volt motor that is powered by an onboard rechargeable battery.

Safety

Safety is essential in the use and maintenance of Greenlee tools and equipment. This instruction manual and any markings on the tool provide information for avoiding hazards and unsafe practices related to the use of this tool. Observe all of the safety information provided.

Purpose of this Manual

This manual is intended to familiarize all personnel with the safe operation and maintenance procedures for the following Greenlee tools:

- UG511 Cable Lubrication System (120 VAC)
- UG512 Cable Lubrication System (12 VDC)

Keep this manual available to all personnel.

Replacement manuals are available upon request at no charge at www.greenlee.com.



Do not discard this product or throw away!

For recycling information, go to www.greenlee.com.

All specifications are nominal and may change as design improvements occur. Greenlee Textron Inc. shall not be liable for damages resulting from misapplication or misuse of its products.

ULTRA GLIDER is a trademark of Greenlee Textron Inc.

Teflon is a registered trademark of E. I. du Pont de Nemours and Company.

KEEP THIS MANUAL

IMPORTANT SAFETY INFORMATION



SAFETY ALERT SYMBOL

This symbol is used to call your attention to hazards or unsafe practices which could result in an injury or property damage. The signal word, defined below, indicates the severity of the hazard. The message after the signal word provides information for preventing or avoiding the hazard.

⚠ **DANGER**

Immediate hazards which, if not avoided, **WILL** result in severe injury or death.

⚠ **WARNING**

Hazards which, if not avoided, **COULD** result in severe injury or death.

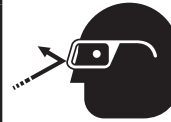
⚠ **CAUTION**

Hazards or unsafe practices which, if not avoided, **MAY** result in injury or property damage.



⚠ **WARNING**

Electric shock hazard:
Disconnect power before servicing.
Failure to observe this warning could result in severe injury or death.



⚠ **WARNING**

Wear eye protection when operating this tool.
Failure to wear eye protection could result in serious eye injury from flying debris.



⚠ **WARNING**

Falling object hazard:
If using this tool on an elevated platform, keep bystanders away from the area.
Failure to observe this warning could result in severe injury or death.



⚠ **DANGER**

Read and understand all of the instructions and safety information in this manual before operating or servicing this tool.

Failure to observe this warning will result in severe injury or death.



⚠ **DANGER**

Do not operate this tool in a hazardous environment. Hazards include flammable liquids and gases and dust.

Failure to observe this warning will result in severe injury or death.

⚠ **WARNING**

- Battery acid is hazardous. Do not attempt to open battery. If acid should come in contact with eyes, flush eyes with water for 10 minutes and seek medical attention.
- Do not immerse battery in liquid. Liquid may cause a short circuit.
- Do not short terminals of battery. A short circuit could cause an explosion or fire.
- Do not expose battery to fire. Fire can cause battery to explode.

Failure to observe these warnings could result in severe injury or death.

IMPORTANT SAFETY INFORMATION

	⚠ CAUTION
	Cable lubricant is slippery. Do not stand or walk in spilled lubricant. Wear nonskid safety shoes. Failure to observe this precaution may result in injury.

⚠ CAUTION
<ul style="list-style-type: none">• Use only new lube or lube free of contaminants. DO NOT USE LUBE WITH BEADS OR SIMILAR MATERIALS!• Do not allow suction pipe to contact ground or other dirty surfaces. <p>Allowing foreign material such as beads, dirt, stones, gravel, metal parts, wire stripping, etc. to enter the suction pipe may damage the pump, motor, or applicators.</p>

Note: Keep all decals clean and legible, and replace when necessary.

Specifications

Motor

UG511 120 VAC, 4 A, 1/3 hp, 3-speed

UG512 12 VDC, 35 A, 1/3 hp, 3-speed

Battery (UG512) 12 V, 18 Ah, sealed lead acid type,
7.12" W x 3" D x 6.5" H

Fluids

Motor Gears Mobil One synthetic grease

Pump Drive Gears 75W-90 synthetic gear oil

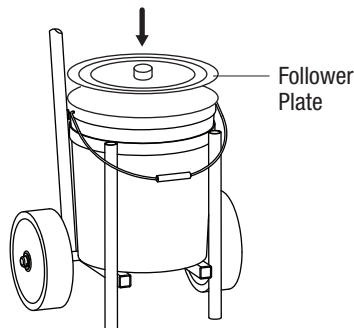
Setup

Attaching the Hose

The first time the tool is used, attach the hose to the pump assembly. Use Teflon® tape on the threads of the hose. Screw the hose into the brass manifold and tighten.

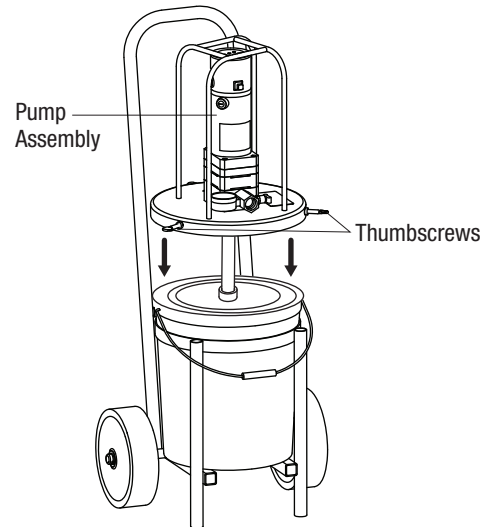
Setting Up the Pump

1. Place a 5 gallon bucket of lubricant into the dolly.
2. Remove the lid from the bucket.
3. Place the follower plate inside the bucket, setting it on top of the lubricant with the hub facing up. Press down to remove any air pockets.



4. Place the pump assembly on top of the bucket, and slide the suction pipe through the center hole in the follower plate. (If it is necessary to prime the pump, refer to "Priming the Pump" below.)

5. Attach the lid to the bucket by tightening the three thumbscrews.



6. Plug in the power cord:
 - UG511: Plug the power cord into a grounded outlet.
 - UG512: Plug the power cord into the battery port.
7. Attach a lubricant applicator to the end of the hose. Refer to "Selecting and Attaching Applicators." (An applicator must be attached to the hose or lubricant will not flow.)
8. Press the medium speed button on the top of the pump unit. Step on the foot switch to start pumping. The pump may take 30 to 60 seconds to build pressure and pump lubricant out of the collet. If the lubricant does not flow, prime the pump.

Priming the Pump

Depending on the viscosity of the lubricant, it may be necessary to prime the pump.

1. Open the bleed valve opposite the pressure gauge and run the pump at high speed until lubricant is seen at the bleed valve. Close the valve.
2. If lubricant still does not flow, pull the pump unit out of the bucket and re-insert the suction tube into the follower plate while the pump unit is running at high speed.

Setup (cont'd)

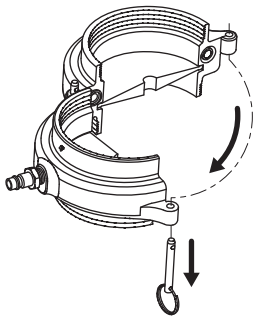
Selecting and Attaching Applicators

Applicators are available in two styles—threaded and slip-in.

- Threaded applicators can be used on any conduit that has threaded ends. They are available in conduit sizes from 3/4" to 4".
- Slip-in applicators can be used on any conduit where the feed direction is horizontal or downward and where a slight reduction of the conduit fill area is permissible. They are available in conduit sizes from 1-1/2" to 6". Slip-in applicators are stepped to fit both schedule 40 and 80 conduit.

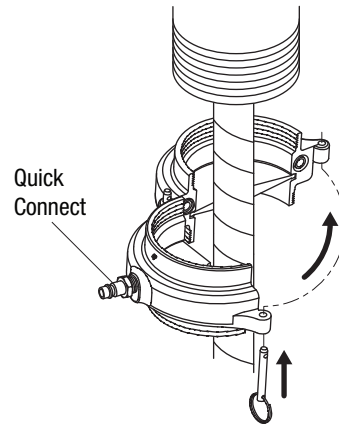
To attach an applicator:

1. Select the appropriate applicator for the application.
2. Remove one of the pins and open the applicator.

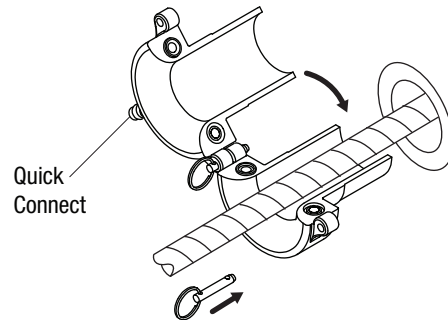


Note: If feeding upward into EMT conduit, fit a threaded EMT adapter (if one is not already fitted) onto the conduit, and attach a threaded applicator to the adapter.

3. **For threaded applicators**, attach the applicator to the threads of the conduit so that the quick connect nipple is accessible. Close the applicator and re-insert the pin. Screw the conduit bushing onto the male threads of the applicator.



For slip-in applicators, place the applicator around the pull rope. Close the applicator and re-insert the pin. Fully insert the applicator into the conduit.

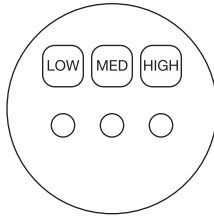


4. Attach the hose to the quick connect nipple on the applicator.

Operation

1. Turn on the main power switch on the side of the motor.
2. Press a speed button on top of the motor to select a pump speed, based on conduit size, speed of pull, and desired coating. Use the following speeds for typical pulls:
 - Low: Up to 2"
 - Medium: 2-1/2" through 4"
 - High: 5" and 6"

The last speed used will be the default speed when the unit is turned on.



3. Step on the foot switch to start the flow of lubricant. Typically, the pump should run only while the cable is moving to avoid wasting lubricant.
4. Verify that lubricant is flowing out of the applicator.
5. Check the pressure gauge. If it reads below 20 psi, the lubricant is running low or the follower plate is not seated against the lubricant. Replace with a fresh bucket or press the follower plate down against the lubricant.

Note: If all three lights on top of the pump assembly begin to flash, an error has occurred. Turn the main power switch off and then back on.

Maintenance

Cleanup

- Wipe out excess lubricant from the applicator.
- Replace the applicator in the carrying case to keep the lubricant from drying out.
- Leave the pump assembly in the lubricant bucket or place it in a fresh bucket. Do not leave the pump intake exposed to air.

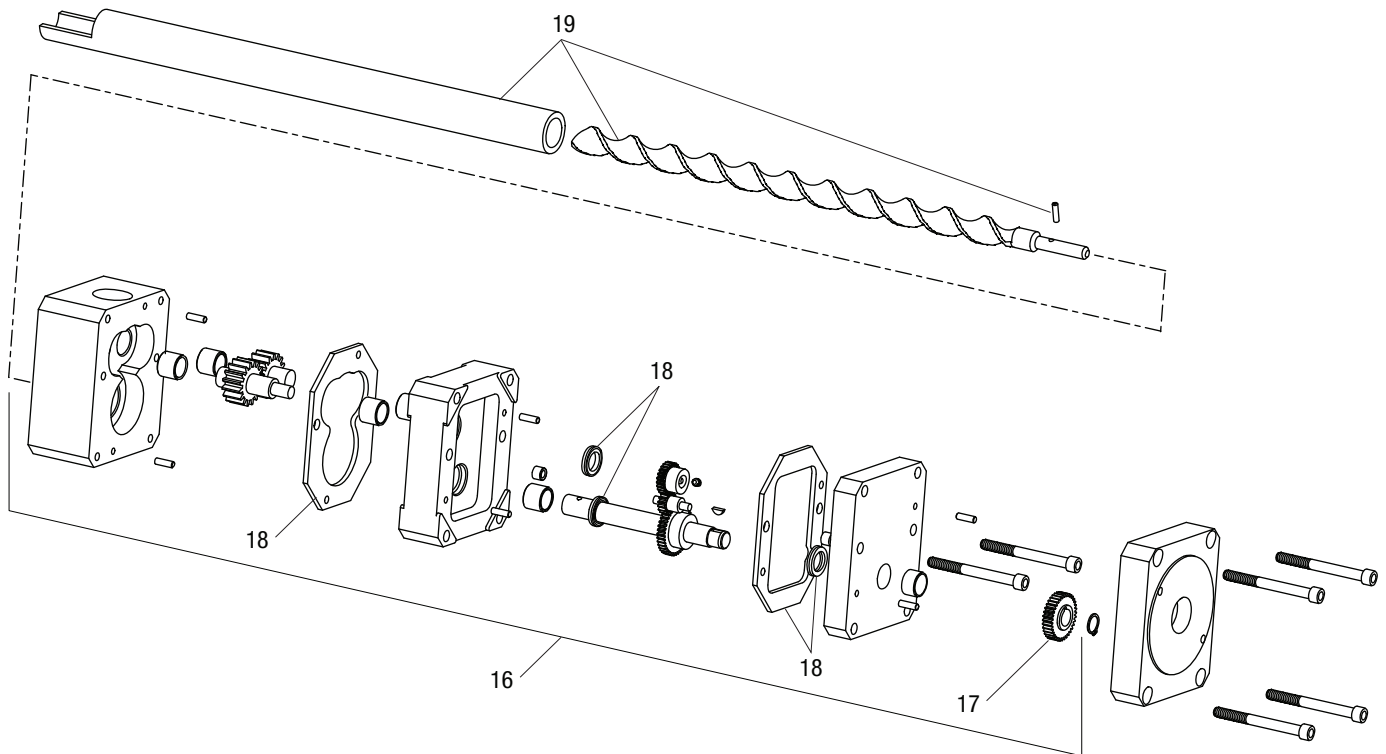
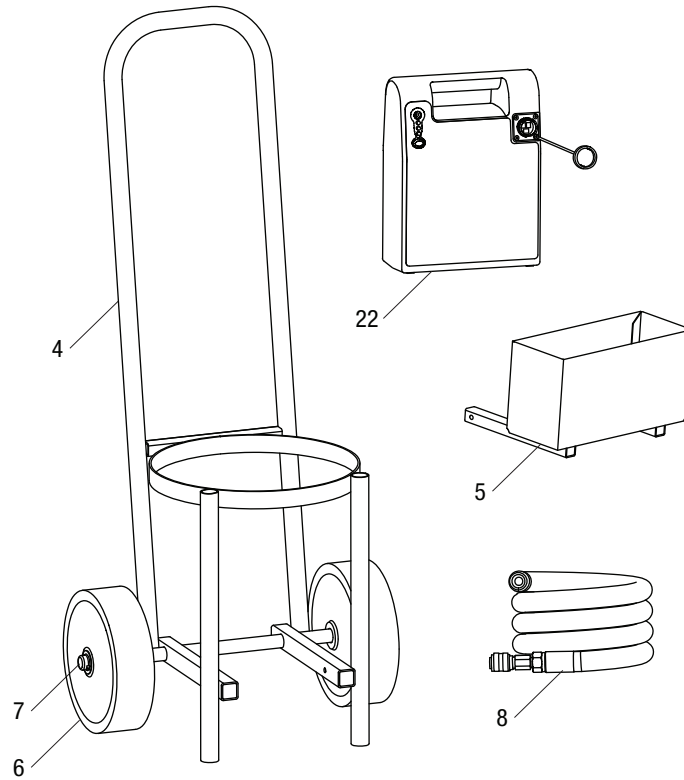
Note: If the lubricant is allowed to dry out in any of the accessories, bathe the item in hot water until the lubricant becomes fluid again. Do not immerse the motor in water.

Battery

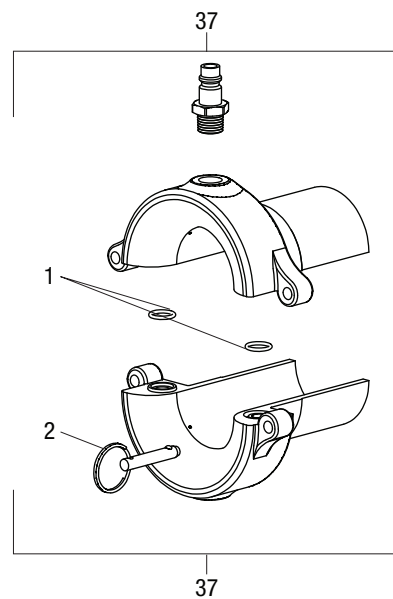
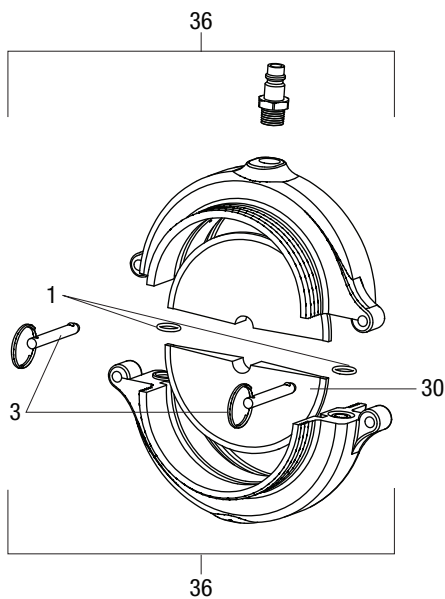
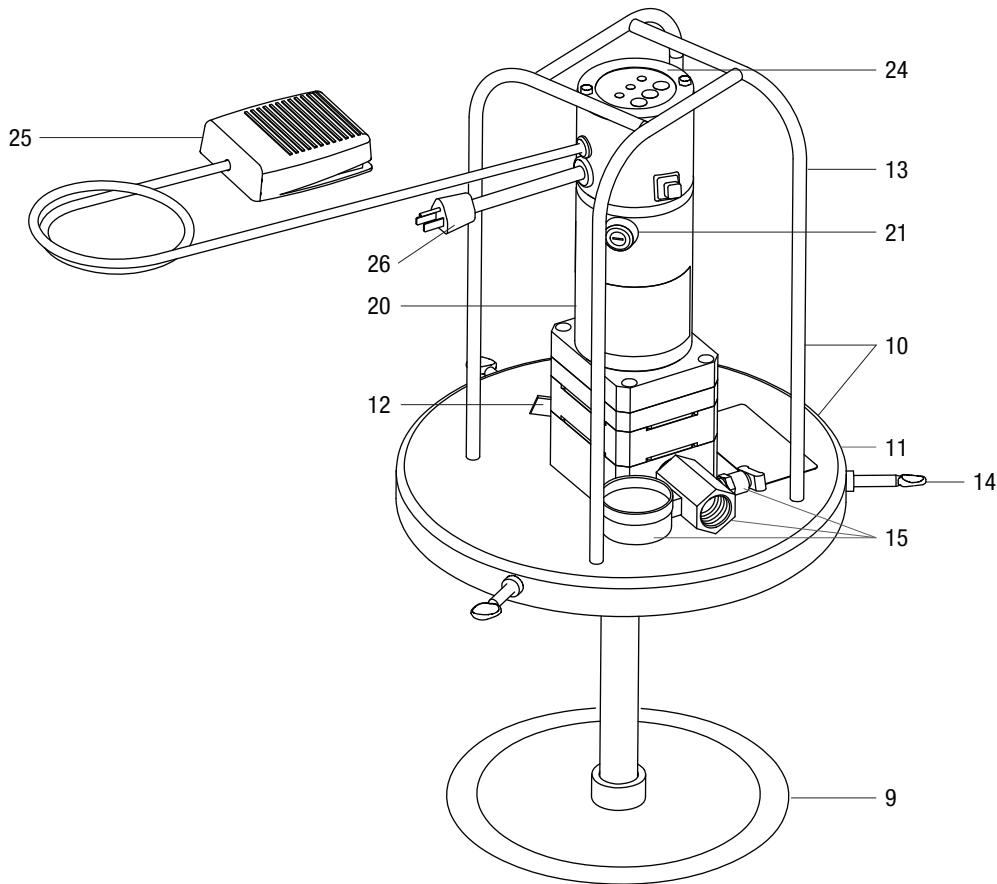
1. Press and hold the battery charge button. When the LEDs light up, the color indicates the status of the battery:
 - Green: Battery is more than half charged
 - Amber: Battery is less than half charged
 - Red: Battery is discharged
2. Charge the battery using the supplied charger. Plug the charger into a wall outlet, and connect the other end to the charging port on the battery. (The red LED will remain on as long as the battery is plugged into a power source.)
 - A first use or completely depleted battery will take 6 to 8 hours to charge.
 - A half discharged battery will take 3 to 4 hours to charge.
 - A battery showing full charge can be charged for 1 to 2 hours.
 - A green indicator light does not necessarily mean that the battery is 100% charged.
 - A fully charged battery should be able to pump three to four 5 gallon buckets of lubricant.

Note: The battery can be charged from a vehicle power supply. However, a vehicle power supply may provide higher than desired charging current, which may damage the battery, and should only be used as a last resort.

Illustration



Illustration



Parts List

Key	Part No.	Description	Qty
1*	52033183	O-ring kit	1
2*	52033184	Short yoke pin kit	1
3*	52033185	Long yoke pin kit.....	1
4*	52033186	Dolly assembly (includes items 6 and 7).....	1
5	52033187	Battery box.....	1
6	52033188	Wheel kit	1
7	52033189	Wheel cap kit	1
8*	52033190	Hose kit.....	1
9*	52033271	Follower plate.....	1
10*	52033272	Lid and cage kit.....	1
11	52033273	Lid kit	1
12	52033274	Sight glass kit.....	1
13	52033275	Cage kit.....	1
14*	52033276	Thumbscrew kit.....	1
15*	52033277	Pressure gauge and fitting kit	1
16	52033278	Gearbox	1
17	52033279	Motor gear	1
18	52033281	Pump seal kit (includes three thrust washers, not shown).....	1
19	52033282	Auger kit.....	1
20	52033283	AC motor kit (UG511).....	1
	52033286	DC motor kit (UG512).....	1
21	52033287	AC motor brush kit (UG511).....	1
	52033293	DC motor brush kit (UG512)	1
22	52033288	Battery pack (UG511).....	1
23	52033289	Battery charger (UG511) (not shown).....	1
24	52033295	AC control assembly (UG511).....	1
	52033294	DC control assembly (UG512)	1
25	52033296	Foot switch	
26	52033297	AC power cord (UG511).....	1
	52033298	DC power cord (UG512).....	1
27	52033299	AC motor ring kit (UG511) (not shown)	1
	52033300	DC motor ring kit (UG512) (not shown).....	1
28	52033301	Caution decal kit (not shown)	1
29	52033302	Battery decal kit (UG512) (not shown)	1

*Indicates that part can be used on Soaper Monkey® Lubricating System.

Parts List (cont'd)

Key	Part No.	Description	Qty
30*	52033303	Applicator brush kit, 1-1/2"	1
	52033304	Applicator brush kit, 2"	1
	52033305	Applicator brush kit, 2-1/2"	1
	52033306	Applicator brush kit, 3"	1
	52033307	Applicator brush kit, 3-1/2"	1
	52033308	Applicator brush kit, 4"	1
36*	52033309	Threaded applicator, 3/4"	1
	52033310	Threaded applicator, 1"	1
	52033311	Threaded applicator, 1-1/4"	1
	52033312	Threaded applicator, 1-1/2"	1
	52033313	Threaded applicator, 2"	1
	52033314	Threaded applicator, 2-1/2"	1
	52033315	Threaded applicator, 3"	1
	52033316	Threaded applicator, 3-1/2"	1
	52033317	Threaded applicator, 4"	1
37*	52033318	Slip-in applicator, 1"	1
	52033319	Slip-in applicator, 2"	1
	52033320	Slip-in applicator, 2-1/2"	1
	52033321	Slip-in applicator, 3"	1
	52033322	Slip-in applicator, 3-1/2"	1
	52033323	Slip-in applicator, 4"	1
	52033324	Slip-in applicator, 5"	1
	52033325	Slip-in applicator, 6"	1

*Indicates that part can be used on Soaper Monkey® Lubricating System.