

# RHINO CONNECT™

S O F T W A R E

**FAST! EASY! AFFORDABLE!**

Facility Maintenance • Professional AV • Datacomm • Electrical • Security • Assembly Shops



Create labels on your PC.  
(Preview and edit, too.)



Print labels at the jobsite with RHINO 6000 or 6500 label printer.  
(No need to key. No time wasted.)

To accelerate your RHINO labeling, use the innovative and easy **RHINO CONNECT™ Software** and create hundreds (or thousands) of labels before you arrive at the jobsite. To minimize your effort, this integrated software precisely matches the functionality of RHINO 6000 and 6500 label printer to print an array of professional labels (vertical wrap, flag, patch panel and more).

Using step-by-step **Label Design Wizard**, you can select label mode, width and length, import and serialize data – even insert, resize and rotate barcodes, symbols, graphics or logos. Once you preview and edit your work, just download from PC to RHINO 6000 or 6500 label printer with the integrated transfer manager. Or print directly from the application.

- **Create** labels using the integrated step-by-step wizard
- **Insert** customized graphics, logos, symbols and industry terms
- **Serialize** data with built-in wizards
- **Import** data from any Windows®-based program
- **Print** labels directly from RHINO CONNECT™ Software
- **Download** labels to RHINO 6000 or 6500 label printer for on-site printing
- **Upload** label files for documentation purposes

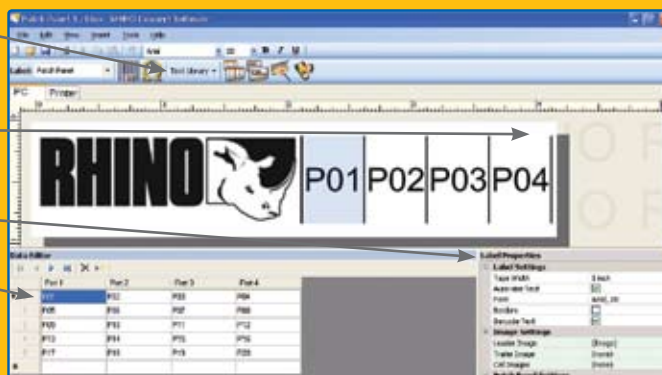
**EXCLUSIVE FEATURES LET YOU LABEL LIKE A PROFESSIONAL – EVEN IF YOU’RE A BEGINNER.**

**Toolbar** – Access frequently-used functions including label type, symbols, label wizard, text library, transfer files and more

**Label Preview** – Preview labels (WYSIWYG)–What You See is What You Get

**Label Properties** – Edit and customize your label

**Data Editor** – Enter, import and edit data with spreadsheet-like functionality



**RHINO**   
PROFESSIONAL LABELING TOOLS  
HOW DO YOU SIGN YOUR WORK?™



# EXCLUSIVE FEATURES GIVE YOU LABELING POWER LIKE NEVER BEFORE.

## Use **RHINO CONNECT™** Software if you want to:

### Shorten the distance.

Let's say your next installation is in Ohio, but the specifications of your labels are in your Virginia office. Just e-mail a CSV file of labels to Ohio. There, connect a RHINO 6000 or 6500 label printer to the receiving PC and use RHINO CONNECT™ Software to download the files. Your installers can print as needed. Or modify as necessary.

### Weather the storm.

Harsh jobsite conditions can challenge labeling accuracy and efficiency. So head indoors to your office and create labels with RHINO CONNECT™ Software on your PC. Then download to RHINO 6000 or 6500 label printer – and each label will be ready to print. This way, frozen fingers won't mean delays or mistakes.

### Increase everyday efficiency – reduce keying errors!

Have your project manager create the label files on his PC, then download to RHINO 6000 or 6500 label printer the night before or first thing in the morning. Watch your installers get more done, with fewer labeling mistakes.

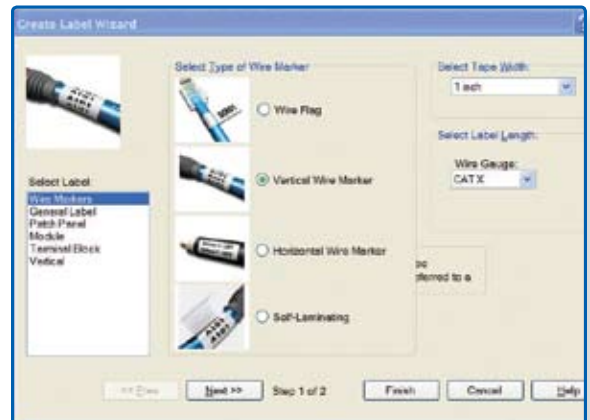
### Document your labeling!

When each job is done, upload from RHINO 6000 or 6500 label printer to your PC. This way, you can accurately update the labels you've printed.

## Work seamlessly, from office to jobsite.

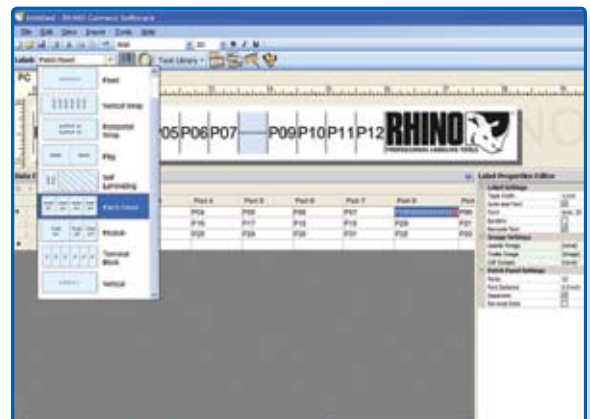
### 1 CREATE

- Select label type, length and width
- Import graphics, logos, symbols and data
- Serialize data, as needed



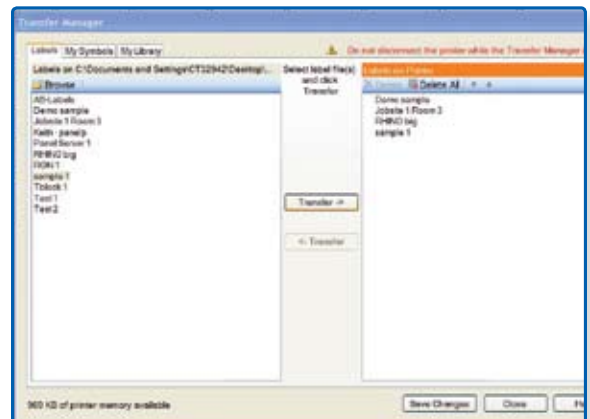
### 2 EDIT

- Customize
- Preview
- Correct



### 3 OUTPUT

- Download to RHINO 6000 or 6500 label printer for jobsite printing
- Or print from your PC
- Upload back to your PC for documentation purposes



**RHINO CONNECT™ Software**  
Part No. 1738636 UPC: 0 71701 110492  
Includes:  
RHINO CONNECT™ Software  
USB Cable



**RHINO 6000 Hard Case Kit**  
Part No. 1734520 UPC: 0 71701 12174  
Includes:  
RHINO 6000 Printer  
RHINO CONNECT™ Software  
Hard Carry Case  
1" Black-on-White Flexible Nylon Label Cartridge  
3/8" Black-on-White Vinyl Label Cartridge  
Li-ion Rechargeable Battery Pack  
AC Adaptor  
USB Cable  
Quick Reference Guide  
RHINO 6000 User Guide CD  
Registration Card



**RHINO 6500 Professional labeling Bundle**  
Part No. 1734521 UPC: 0 71701 12175 2  
Includes:  
RHINO 6500 Printer  
RHINO CONNECT™ Software  
1" Black-on-White Flexible Nylon Label Cartridge  
3/8" Black-on-White Vinyl Label Cartridge  
Li-ion Rechargeable Battery Pack  
AC Adaptor  
USB Cable  
Quick Reference Guide  
RHINO 6500 User Guide CD  
Registration Card



For more information visit: [www.rhinolabeling.com](http://www.rhinolabeling.com) or call us at 1-800-426-7827.  
©2007 DYMO, Stamford, CT Sanford, LP., Oak Brook, IL 60523 A Newell Rubbermaid Company [www.rhinolabeling.com](http://www.rhinolabeling.com) 29810  
Images and specifications subject to change without notice.

**RHINO**   
PROFESSIONAL LABELING TOOLS  
HOW DO YOU SIGN YOUR WORK?™