



cableorganizer[®]
.com

eliminate the clutter..



> AEROSPACE / AIRCRAFT

Cage Code: 3CN02 GSA Contract: GS-07F-0723N
Woman Owned Business

Thank you for requesting the new Cable Organizer Aerospace/Aircraft catalog. Inside these pages, you'll find everything you need for your cable management needs: polyethylene braided sleeving; flame retardant wire loom; Teflon wire management products; heat shrink tubing; optical fiber raceways; floor ramps/cable guards; and hundreds of other industry-specific products to protect and manage aircraft cables and wiring.

We know you're eager to dive into the catalog, so we won't keep you much longer. We'd just like to share a few things that we do differently from other companies... things that make doing business with us not only easier and faster, but a real pleasure:

- Actual human beings, not machines, answer the phones and they pick up by the second ring!
- Live customer care is available 24/7.
- We double check every single order. If there's a problem of any sort, we contact you and work out a "Plan B" to avoid wasted time.
- We keep our prices competitive because we want you to keep coming back to CableOrganizer.com.
- We offer special, bulk pricing for large orders.
- We do custom products and custom sizes, selling many products by the foot so you don't have to buy the whole roll.
- Most orders are shipped within two business days.
- We go above and beyond the call of duty to make sure your order is filled correctly and gets to you quickly.

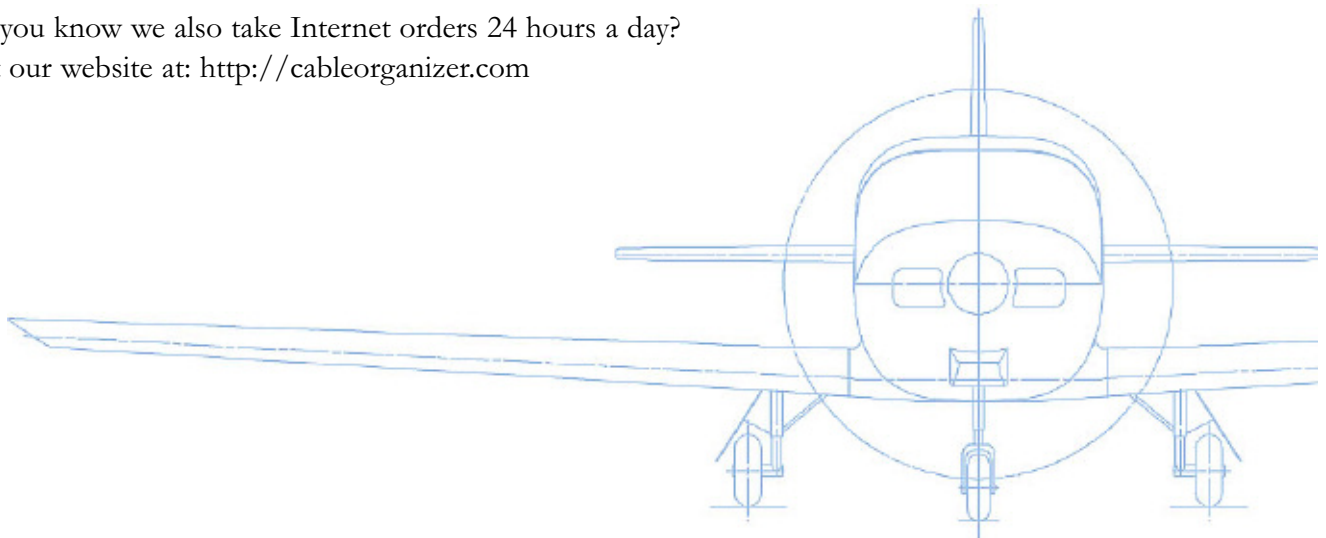
As you can see, customer service is every bit as important to us as the quality of the products we sell. So please feel free to contact us and experience our Cable Organizer customer care for yourself. Call toll free: 1-866-222-0030.

We hope you enjoy our products AND our people. Now dig into the catalog!

Sincerely,

Management and Staff,
CableOrganizer.com

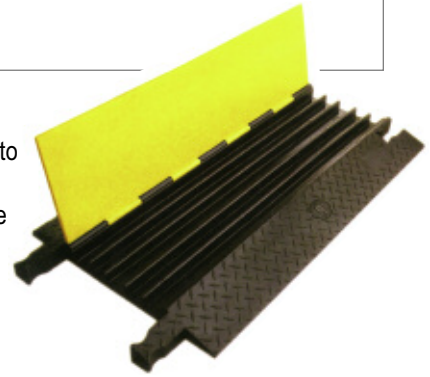
PS: Did you know we also take Internet orders 24 hours a day?
Visit our website at: <http://cableorganizer.com>



▶ **YELLOW JACKET® CABLE PROTECTOR**

If you are looking for a heavy duty, high abrasion and traffic resistance cable protector, the [Yellow Jacket®](#) may be right for you. heavier than the Bumble Bee™, the distinctive Yellow Jacket® is easy to set up and tear down, and provides high performance cord cover for cables and hoses. Made of standard polyurethane, it has the resilience, hardness and resistance polyurethane is known for the color, texture and "dog-bone" safety connector are engineered to release before breaking under load or during disassembly.

The [Yellow Jacket®](#) is designed for continuous heavy use traffic and works well in outdoor environments, such as construction and industrial sites, and special events.



MODEL	CHANNEL	CHANNEL HEIGHT	TOTAL HEIGHT	TOTAL WIDTH	TOTAL LENGTH	WEIGHT
YJ1-300	1	3" (7.6 cm)	4" (10.2 cm)	21" (53.3 cm)	36" (91.4 cm)	40 lbs. (18.1 kg)
YJ1-500	1	5" (12.7 cm)	6" (15.2 cm)	27" (68.6 cm)	36" (91.4 cm)	90 lbs. (40.8 kg)
YJ2-400	2	4" (10.2 cm)	5.5" (14.0 cm)	42" (1.1 cm)	36" (91.4 cm)	130 lbs. (59 kg)
YJ3-225	3	2.25" (5.7 cm)	3" (7.6 cm)	20" (50.8 cm)	36" (91.4 cm)	32 lbs. (14.5 kg)
YJ3-225W	3	2.25" (5.7 cm)	3" (7.6 cm)	27" (68.6 cm)	36" (91.4 cm)	48 lbs. (21.8 kg)
YJ3EB-225	3	2.25" (5.7 cm)	3" (7.6 cm)	20" (50.8 cm)	6" (15.2 cm)	16 lbs. (7.3 kg)
YJ3T-225*	3	2.25" (5.7 cm)	3" (7.6 cm)	20" (50.8 cm)	25" (63.5 cm)	22 lbs. (10.0 kg)
YJ4-125	4	1.25" (3.2 cm)	2" (5.1 cm)	18" (45.7 cm)	36" (91.4 cm)	26 lbs. (11.8 kg)
YJ4EB-125	4	1.25 in. (3.2 cm)	2" (5.1 cm)	18" (45.7 cm)	6" (15.2 cm)	8 lbs. (3.6 kg)
YJ4T-125*	4	1.25 in. (3.2 cm)	2" (5.1 cm)	18" (45.7 cm)	25" (63.5 cm)	14 lbs. (6.4 kg)
YJ5-125	5	1.25 in. (3.2 cm)	2" (5.1 cm)	19" (48.3 cm)	36" (91.4 cm)	28 lbs. (12.7 kg)
YJ5EB-125	5	1.25 in. (3.2 cm)	2" (5.1 cm)	19" (48.3 cm)	6" (15.2 cm)	8 lbs. (3.6 kg)
YJ5I-125	5	1.25 in. (3.2 cm)	2" (5.1 cm)	38" (96.5 cm)	38" (96.5 cm)	42 lbs. (19.1 kg)
YJ5T-125*	5	1.25 in. (3.2 cm)	2" (5.1 cm)	19" (48.3 cm)	25" (63.5 cm)	15 lbs. (6.8 kg)

* Indicates a corner part. Please specify a 45° left or right turn when ordering.

▶ **THE HIPERTHANE® DIFFERENCE**

Protect your cables from high abrasion and continuous heavy vehicle traffic. [Hipertthane®](#) is engineered and processed to even higher specifications than our standard polyurethane. Designed to the same rugged specifications as our Yellow Jackets®, our cable protectors made with [Hipertthane®](#) can withstand heavier traffic flows, higher abrasion and more impact, for longer periods of time.

Available in 1 channel (3" H and 5"H) and 3 Channel (2.25" H).



▶ **YELLOW JACKET® WASP™ ADA COMPLIANT WHEELCHAIR RAMP**

[WASP™ \(Walkway Access for Special Purposes\)](#) is the first cable cover ramp meeting the stringent requirements established by the Americans with Disabilities Act. As a polyurethane product, [WASP™](#) is high load-bearing, abrasion resistant, and tolerant to most solvents. It is cost-efficient and lightweight enough to use in a wide variety of applications, including fairs, sporting events, public buildings and hospitals. The color is internationally recognized blue used in most ADA signage and featuring contrasting white wheelchair accessible icon.

Features:

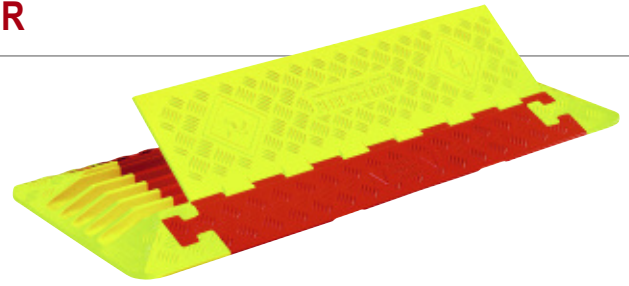
- ▶ Low profile, lies flat for easy storage
- ▶ Polyurethane material (UV stabilized), 0 Outgassing
- ▶ 1 piece design simplifies assembly and take-down
- ▶ High load-bearing capacity
- ▶ 2.5" side rails and textured surface to prevent slippag
- ▶ Resistant to oil and solvents
- ▶ Non-conductive surface

MODEL	DESCRIPTION	LENGTH	WIDTH	HEIGHT	WEIGHT
5-125	WASP™ ADA compliant Ramp	60" (1.5 m)	40" (1.0 m)	2" (5.1 cm)	78 lbs. (43 kg)

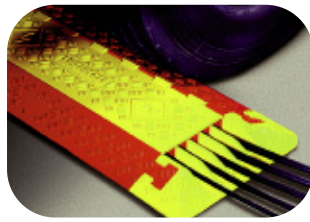
▶ LINEBACKER® HEAVY DUTY CABLE PROTECTOR

The [Linebacker® Heavy Duty 2,3,4 and 5 Channel and cord protector system](#) is the perfect solution for temporary events such as fairs, festivals, conventions, construction projects and any other event where you could have cords and hoses that must cross trafficked areas. These cable protectors seem expensive, but when you consider that they can sustain up to 40,300 pound load capacity per axle, you begin to realize that they are a real bargain.

We also have ADA ramps available which make this the best solution for any public event. Strollers, carts, passenger vehicles, trucks and wheelchairs can easily roll over these systems without causing any damage.



Carrying handle is conveniently recessed on underside of protector



The [Linebacker® HD](#) 5-channel cable and cord protector system is ideal for for vehicle and pedestrian traffic in public, commercial and industrial applications.

Features & Benefits:

Polyurethane Construction for weather and abrasion resistance and a high load-bearing capacity. Non-Conductive Material insulates electrical cables from human contact and satisfies state and federal regulatory agencies. 36" Length Per Lineal Protector makes length-of-run calculations easy to figure.

5-Channel System Protects Cable & Hose lines up to 1.25 in. Outside Diameter 5 bar Tread Plate Surface increases traction. Safety Warning Symbols permanently molded into lid warn pedestrians of trip and/or electrical hazards. Modular Interlocking Design is Lightweight; Easy to transport, setup, breakdown, and store. Multi-length applications. Recessed Carrying Handle allows for moving with ease. Universal Safety Colors for High Visibility.

5 Channel Cord protectors are ideal for:

- ▶ Motion Picture / Television Industry
- ▶ Amusement Parks / Fairs
- ▶ Convention Centers
- ▶ Amphitheatres
- ▶ Festivals
- ▶ Military Applications
- ▶ Arenas & More

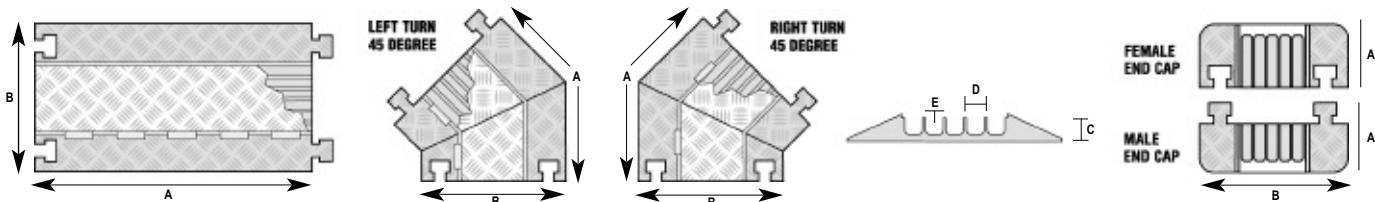
Cord Protector Features:

- ▶ Safety warnings molded into lid
- ▶ Stay-open lid that makes placing and removing cables and hose lines easy
- ▶ 5-bar tread surface to provide maximum traction
- ▶ Patented heavy duty "T" connector interlocks modular sections
- ▶ Carrying handle conveniently recessed on underside of protector
- ▶ 20,500 lbs Load Capacity/tire
- ▶ 36" lengths for easy sizing

Linebacker® HD-5

MODEL	DESCRIPTION	A- LENGTH	B-WIDTH	C-HEIGHT	D-CHANNEL WIDTH	E-CHANNEL HEIGHT	WEIGHT
CP5X125-HD	5-Channel Cord Protector	36" (914.4 mm)	20" (508 mm)	2.31" (57.2 mm)	1.25" (31.8 mm)	1.25" (31.8 mm)	25 lbs. (11.3 kg)
CPEC5X125-HD (Pair Only)	5 Channel End Caps (female) (male)	7.5" (114.3 mm)	20" (508 mm)	2.31" (57.2 mm)	1.25" (31.8 mm)	1.25" (31.8 mm)	3.5 lbs (1.6 kg)
		5.25" (183.4 mm)	20" (508 mm)	2.31" (57.2 mm)	1.25" (31.8 mm)	1.25" (31.8 mm)	3.5 lbs (1.6 kg)
CPT5X125R	5-Channel 45° Right Turn	25" (635 mm)	20" (508 mm)	2.31" (57.2 mm)	1.25" (31.8 mm)	1.25" (31.8 mm)	13 lbs (5.9 kg)
CPT5X125L	5-Channel 45° Left Turn	25" (635 mm)	20" (508 mm)	2.31" (57.2 mm)	1.25" (31.8 mm)	1.25" (31.8 mm)	13 lbs (5.9 kg)

Specify Color After Model No.; Y/O=Yellow lid with Orange Ramps • O/B= Orange Lid w/ Black Ramps • B/B= Black Lid w/ Black Ramps



SPECIFICATION DATA		LOAD CAPACITY		Safety Warning Symbols Molded into Lid
Material Polyurethane (UV stabilized)	Channels	Max Load Per Tire 70°F (21°C)	
Operating Temp -40°F to 120°F (-40°C to 48°C)	5 20,150 lbs. (9,140 kg)	
Hinge Pin Material Reinforced fiberglass	4 20,150 lbs. (9,140 kg)	
Safety Symbols Per ANSI. Z535.3-1991	3 14,210 lbs. (6,446 kg)	
		2 10,880 lbs. (4,935 kg)	

▶ LINEBACKER® HD-5-ADA ACCESS RAMPS AND RAILS

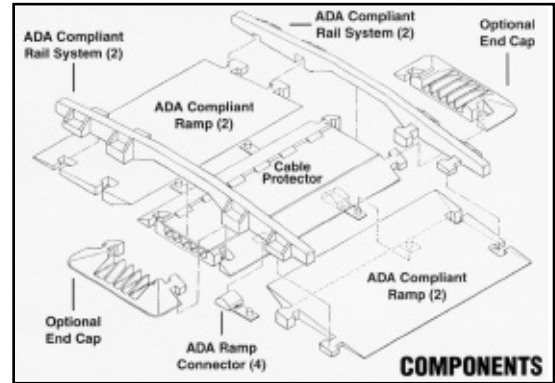
[Cross-Guard™ ADA Compliant Access Ramp & Rail Accessories](#)

The **Linebacker® HD-5** heavy duty 5-channel system is ideal for vehicle and pedestrian traffic in public, commercial, and industrial applications. The gentle slope and slip resistant ADA compliant ramps work in conjunction with the **HD-5** to provide a safe crossing point for wheelchairs, carts and vehicles with small wheels such as stroller.

For Heavy Duty 4 and 5 Channel Cable Protectors

Features:

- ▶ Diamond tread traction surface
- ▶ ADA compliant symbols molded into each ramp surface
- ▶ Quick attachment to one or multiple cable connectors
- ▶ Add ramps and rails whenever requirements specify
- ▶ Does not prevent accessibility to cables and cords
- ▶ 1 person installation - no tools required
- ▶ Comes in 36" lengths for convenient sizing
- ▶ Lightweight
- ▶ 11,500 lbs max. load per tire
- ▶ 0 Outgassing
- ▶ Resistant to oils & solvents



Linebacker® HD-5

MODEL	DESCRIPTION	COLOR	A-WIDTH	B-WIDTH	C-HEIGHT	WEIGHT
CPADARP4/5 ADA (Pair)	Ramps and Connector for CP5X125 and CP5X125 (2 Ramps and 4 Connector)	Blue	36" (914.4 mm)	21.25" (539.8 mm)	2.31" (57.2 mm)	21 lbs. (9.5 kg)
CPADARL4/5 ADA (Each)	Rail for CPADARP4/5	Yellow	1.5" (38.1 mm)	54" (1371.6 mm)	2" (50.8 mm)	3.5 lbs. (1.6 kg)

SPECIFICATION DATA		LOAD CAPACITY		ADA COMPLIANT SYMBOLS	
Material	Polyurethane (UV stabilized)	Capacity	Max Load Per Tire 70°F (21°C)		ADA Compliant Symbols Molded into Each Ramp
Operating Temp	-40°F to 120°F (-40°C to 48°C)	Ramps	10,500 lbs. (4,763 kg)		

▶ BUMBLE BEE™ CABLE PROTECTOR

The **Bumble Bee™** is easy to set up and tear down, and provides affordable cord cover for cables and hoses.

Made of standard polyurethane, it has the resilience, hardness and resistance polyurethane is known for the color, texture and T-connectors are designed to be compatible with the light-duty cord and cable covers you may already have.

The **Bumble Bee™** is designed for low-volume vehicular and foot traffic and works well in indoor environments, such as conventions and special events.

The Linebacker®HD-5 or GP-5 is better suited for industrial, heavy use conditions where set up and tear down occur more frequently.



Features:

- ▶ Rounded dividers protect cables from snags or tears
- ▶ T-connectors are compatible with other cable Protector brands
- ▶ Hinged lid for easy loading
- ▶ Diamondplate texture increases traction
- ▶ Components to fit any protection need
- ▶ Easy set up and take-down
- ▶ Compact design for quick storage
- ▶ 0 Outgassing

Bumble Bee™

MODEL	SLOTS	SIZE	HEIGHT	WIDTH	LENGTH	WEIGHT
BB5-125	5	1.25" (3.3 cm)	2" (5.1 cm)	17.5" (44.5 cm)	36" (91.4 cm)	20 lbs.(9.1 kg)
BB5EB-125	5	1.25" (3.3 cm)	2" (5.1 cm)	17.5" (44.5 cm)	4.8" (12.1 cm)	7 lbs. (3.2kg)
BB5X-125	5	1.25" (3.3 cm)	2" (5.1 cm)	17.5" (44.5 cm)	17.5" (44.5 cm)	12 lbs.(5.5 kg)
BB5Y-125	5	1.25" (3.3 cm)	2" (5.1 cm)	17.5" (44.5 cm)	19.5" (49.5 cm)	12 lbs.(5.5 kg)

▶ 5-CHANNEL CABLE GUARD®

In the construction and utilities industry very expensive electrical on hoses cables need protection from heavy machinery and adverse weather conditions. In the entertainment industry, the power and telecommunications cables always need protection from local automobile traffic. Indoors, they would need protection from heavy pedestrian traffic. Wherever there are cables and people, there is a need for [Cable Guards®](#).

One of the things that make these [Cable Guards®](#) unique is their button down lids. No other brand has this feature.

Heavy Industry

Entertainment Industry: Heavy electrical cables and telecommunications cables at temporary sites for filming, sporting events, concerts and gala affairs.

Utility Companies: Maintenance at job sites, power plants, and water treatment facilities all over the world need to ensure that the services to millions of consumers stay on.

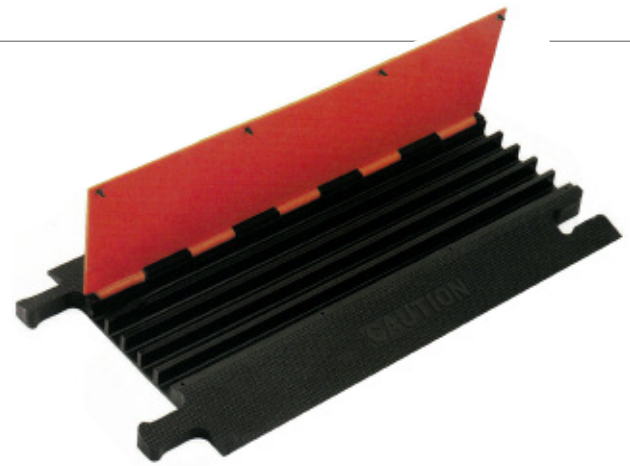
Government Agencies: Must always practice prudent SAFETY when building or providing maintenance services.

Easy to Configure

Certain situations will require your guards to go where your cables go. For this reason, [Cable Guards®](#) come in left and right 90° angles, that have interlocking capabilities allowing for multi-length configurations to suit your everyday needs.

Easy to Store

All guards come with a recessed handle which makes them easy to carry. When not in use, [Cable Guards®](#) can be stacked for easy storage.



Features:

- ▶ Made of high quality Polyurethane
- ▶ Unique button down lid
- ▶ Operating temperature: -60°F to +150°F
- ▶ Max. load per tire: 22,500 lbs
- ▶ Rebound: 100%/ 2140 BTR
- ▶ Elasticity: 500%
- ▶ Outgassing: None
- ▶ Oil and solvent resistant
- ▶ UV resistant
- ▶ Mildew resistant
- ▶ Interlocking for minimum movement
- ▶ Diamondplate raised texture for maximum traction
- ▶ Easy setup and take-down
- ▶ Ultra compact design for quick storage

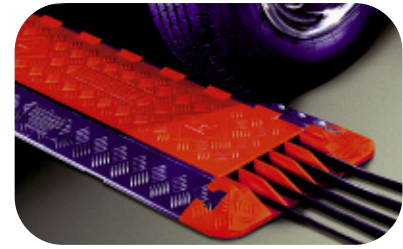
5-Channel Cable Guard

PART #	DESCRIPTION	CHANNEL WIDTH	CHANNEL HEIGHT	TOTAL LENGTH	TOTAL WIDTH	WEIGHT	COLOR
CP5X5140-BO	5-Channel	1.375"	1.75"	36"	17.25"	22 lbs	Black w/Orange lid
CPEC-5140	End Cap (pair)	1.375"	1.75"	8"	17.25"	5 lbs	Orange
CPYSC-5140	Right or Left Angle (each)	1.375"	1.75"	31"	31"	23 lbs	Black w/Orange lid



LINEBACKER® GP-5 CORD PROTECTOR

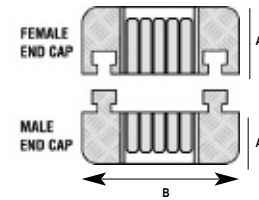
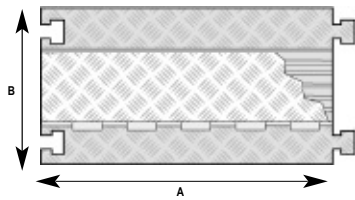
The **Linebacker® GP-5** five channel cable and cord protector system is compatible with the Hubbell TredTrak® Systems, and is the perfect solution for temporary events such as fairs, festivals, conventions, and any other public event where you could have cords and hoses that must cross trafficked areas. These cable protectors can sustain a 10,500 pound capacity. Strollers, carts, passenger vehicles and small trucks can easily roll over these cable covers without causing any damage.



Linebacker® GP-5

MODEL	DESCRIPTION	A- LENGTH	B-WIDTH	C-HEIGHT	D-CHANNEL WIDTH	E-CHANNEL HEIGHT	WEIGHT
CP5X125-GP	5-Channel Protector	36" (914.4 mm)	17.5" (444.5 mm)	1.95" (50 mm)	1.3" (33 mm)	1.3" (33 mm)	18 lbs. (8.2 kg)
CPEC5X125-GP (Pair Only)	5 Channel End Caps (female) (male)	4.75" (120.7 mm)	17.5" (444.5 mm)	1.95" (50 mm)	1.3" (33 mm)	1.3" (33 mm)	2.7 lbs (1.2 kg)
		4.75" (120.7 mm)	17.5" (444.5 mm)	1.95" (50 mm)	1.3" (33 mm)	1.3" (33 mm)	2.7 lbs (1.2 kg)

Specify Color After Model No.; Y/O + Yellow lid with Orange Ramps • O/B= Orange Lid w/ Black Ramps • B/B= Black Lid w/ Black Ramps



LINEBACKER® GP-1 HOSE/CABLE PROTECTOR

The **Linebacker® GP-1** general purpose 1 channel system is ideal for vehicle and pedestrian traffic in public, commercial, and industrial applications. The single channel systems protect valuable electrical cables and hose lines from vehicle and foot traffic. Accommodates cable and hose lines up to 1.25 inches outside diameter. Ideal for temporary re-routing of single cables and hose lines including fragile fiber optic telecommunications cable.



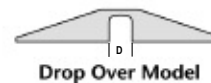
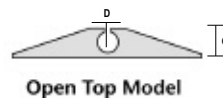
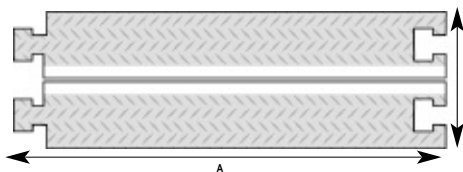
Features:

- ▶ Diamond tread traction surface
- ▶ Safety warning symbols molded into ramp surface
- ▶ Heavy duty T-connector interlocks modular sections
- ▶ Carrying handle is conveniently recessed on underside of protector
- ▶ Comes in 36" lengths for convenient sizing
- ▶ 11,700 lbs max. load per tire
- ▶ -40°F to 120°F Operating Temperature
- ▶ Polyurethane material (UV stabilized)

Linebacker® GP-1

MODEL	DESCRIPTION	A- LENGTH	B-WIDTH	C-HEIGHT	D-CHANNEL WIDTH	WEIGHT
CP1X125-GP	1-Channel Protector - Open Top	36" (914.4 mm)	11.5" (292.1 mm)	1.6" (40.6 mm)	1.25" (31.8 mm)	9 lbs. (4.1 kg)
CP1X125-GP DO	1-Channel Protector - Drop Over	36" (914.4 mm)	11.5" (292.1 mm)	1.6" (40.6 mm)	1.25" (31.8 mm)	9 lbs. (4.1 kg)

Specify Color After Model No.; O = Orange • B = Black



SPECIFICATION DATA		LOAD CAPACITY		Safety Warning Symbols Molded into Lid
Material	Polyurethane (UV stabilized)	Channels	Max Load Per Tire 700F (210C)	
Operating Temp	-40°F to 120°F (-40°C to 48°C)	5	10,500 lbs. (4,763 kg)	
Hinge Pin Material	Reinforced fiberglass	1	11,700 lbs. (5,307 kg)	
Safety Symbols	Per ANSI. Z535.3-1991			

CABLEGUARD® DROPOVERS

These [light duty dropovers](#) (ED 1050) are perfect to supply temporary housing for cords and cables in offices with computer, phone and light electrical cables, schools, computer labs, warehouses, malls, retail stores, etc ...where there is pedestrian traffic. Sturdier than Wiremold cord covers and expandable like our heavy duty cable protectors, they offer great versatility. Because they interlock with one another, you can add as many or as little as you need. Made of quality polyurethane, they are very durable and an indispensable companion to any smooth floor surface. The ED 1010 is a medium duty dropover. It supplies temporary housing for cords and cables in plants, malls, retail stores, parking lots, fairs and expos etc ...where there is light vehicle traffic.

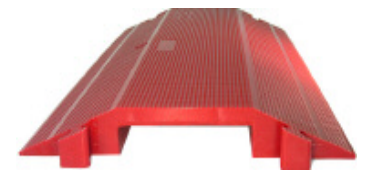


CableGuard ED 1050

Sturdier than Wiremold cord covers and expandable like our heavy duty cable protectors, they offer great versatility. Because they interlock with one another, you can add as many or as little as you need. Made of quality urethane, they are very durable and an indispensable companion to any smooth floor surface.



CableGuard ED 8200



CableGuard ED 1010

Features:

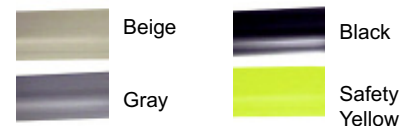
- ▶ Made of Polyurethane
- ▶ Operating temperature: -60°F to +150°F
- ▶ Max. load per tire: **2,500 lbs (1,132 tons) for the ED 1050**
7,500 lbs (3,400 tons) for the ED 1010
- ▶ Rebound: 100%/ 2140 BTR
- ▶ Elasticity: 500%
- ▶ Outgassing: None
- ▶ Oil and solvent resistant
- ▶ UV resistant
- ▶ Mildew resistant
- ▶ Interlocking for minimum movement
- ▶ Diamondplate raised texture for maximum traction
- ▶ Easy setup and take-down
- ▶ Ultra compact design for quick storage

Cable Guard ED1050 Dropover

MODEL	CHANNEL WIDTH	CHANNEL HEIGHT	LENGTH	WIDTH	WEIGHT	COLOR
1050-36	1.5"	.5"	36"	5.25"	3 lbs	DARK GRAY, RED
1010-36	4"	1"	36"	10.75"	9 lbs	BLACK, RED
8200-36	7.75"	2"	36"	19.75"	36 lbs	RED

CORD PROTECTORS

The [1400 Series flexible wire cover system](#) Wiremold is the ideal way to keep from tripping on loose cables and cords running across a walkway or behind your desk. Covers, hides and protects cords and cables while keeping floors clear and safe. It lays flat and stays flat. Easy to install. Fits over cords up to 7/16 in. in diameter.



These [flexible wire and cord covers](#) by Wiremold provide great cable protection. They are available in 5', 10' and 50' lengths and in Beige, Black, Brown, and Gray. We also have high-visibility yellow available in 50 foot lengths.

Cable Protectors are very easy to install. There is an open slit on the bottom of the rubber strip that easily opens up for cord insertion.

Cord Protector

MODEL	DESCRIPTION	LENGTH (FT.)	COLOR
GR1400-5	Cord Protector	5'	Gray
BE1400-5	Cord Protector	5'	Beige
BK1400-5	Cord Protector	5'	Black
BK1400-10	Cord Protector	10'	Black
BK1400-50	Cord Protector	50'	Black
YL1400-50	Cord Protector	50'	Yellow

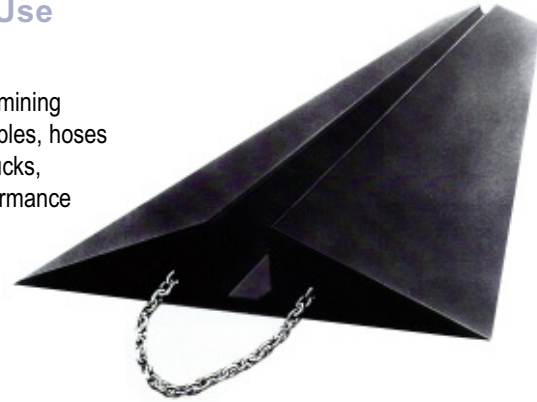
CROSSOVER™

Engineered for Mining, Customized for Special Use

Originally patented in 1974 for the high impact, high performance needs of the mining industry, **Crossover™** provides extreme heavy-duty protection for very large cables, hoses or above-ground pipes. Engineered to stand up to regular impact by 350-ton trucks, **Crossover™** are custom-built, single-piece cable protectors made of high-performance **Hiperthane®**.

Heavy-duty **Crossover™** protects electrical cables from the weight of heavy equipment and prevents downtime from severed cables. **Crossover™** are available in the standard sizes listed here and in custom sizes.

A centered lengthwise slot seats the cable, which is protected by a curved cap. For ease in towing, heavy-duty steel chains are connected to each end. Available color: Black



Cable – Protection
EXTREME DUTY

Features:

- ▶ Non-conductive
- ▶ Non-Sparking
- ▶ Self-extinguishing
- ▶ Multiple layers of Hiperthane®, expanded metal, composite graphite
- ▶ 1/2 in. Proof-coil chain
- ▶ 0 Outgassing

Crossover™

MODEL	TOTAL WIDTH	TOTAL DEPTH	DIAM.	FLOOR	STEP	TOTAL HEIGHT	TOTAL WIDTH	TOTAL LENGTH	WEIGHT
42-3	3.5" (8.9 cm)	3" (7.6 cm)	3" (7.6 cm)	1	1	4.5" (11.4 cm)	36" (91.4 cm)	10" (3.0 cm)	550 lbs. (250 kg)
Other standard lengths: 20"/6.1 m (1,100 lbs/500 kg); 30"/9.1 m (1,650 lbs/750 kg); 38"/11.6 m (2,090 lbs/950 kg).									
42-4	4" (10.2 cm)	4.5" (11.4 cm)	4" (10.2 cm)	1	2	5.5" (14.0 cm)	36" (91.4 cm)	10" (3.0 cm)	746 lbs. (339 kg)
Other standard lengths: 20"/6.1 m (1,482 lbs/674 kg); 30 in./9.1 m (2,238 lbs/1,017 kg); 38 in./11.6 m (2,835 lbs/1,289 kg).									
42-5	5" (12.7 cm)	5.5" (14.0 cm)	5" (12.7cm)	1	3	6.5" (16.5 cm)	36" (91.4 cm)	10" (3.0 cm)	942 lbs. (428 kg)
Other standard lengths: 20"/6.1 m (1,885 lbs/857 kg); 30"/9.1 m (2,827 lbs/1,285 kg); 38"/11.6 m (3,581 lbs/1,628 kg).									
54-3	3.5" (8.9 cm)	3" (7.6 cm)	3" (7.6 cm)	1	1	4.5" (11.4 cm)	46" (1.2 cm)	10" (3.0 cm)	690 lbs. (314 kg)
Other standard lengths: 20"/6.1 m (1,380 lbs/627 kg); 30"/9.1 m (2,070 lbs/941 kg); 40"/12.2 m (2,760 lbs/1,255 kg); 44"/13.4 m (3,036 lbs/1,380 kg).									
54-4	4.5" (11.4 cm)	4" (10.2 cm)	4" (10.2 cm)	1	2	5.5" (14.0 cm)	46" (1.2 cm)	10" (3.0 cm)	941 lbs. (428 kg)
Other standard lengths: 20"/6.1 m (1,881 lbs/855 kg); 30"/9.1 m (2,822 lbs/1,283 kg); 40"/12.2 m (3,762 lbs/1,710 kg); 44"/13.4 m (4,139 lbs/1,881 kg).									
54-5	5.5" (14.0 cm)	5" (12.17 cm)	5" (12.17 cm)	1	3	6.5" (16.5 cm)	46" (1.2 cm)	10" (3.0 cm)	1,191 lbs. (541kg)
Other standard lengths: 20"/6.1 m (2,382 lbs/1,083 kg); 30"/9.1 m (3,574 lbs/1,625kg); 40"/12.2 m (4,765 lbs/2,166 kg); 44"/13.4 m (5,241 lbs/2,464 kg).									

Cable Protection

▶ PET BRAIDED SLEEVING

PET is used for an infinite variety of applications. Due to its expandable nature, PET's unique braided construction enables quick and easy installation over large connectors. Possible applications include wires, harnesses, cables, hoses, springs, rods, and chains. It is readily used in the automotive, computer, industrial, scuba, electronics, wire harness, A/V industries and the army.

PET is braided from .010" monofilament made from PolyEthylene Terephthalate, with a continuous operating temperature of -103°F to 257°F. **PET** melt temperature is 446°F and is offered in 16 vivid colors. PET can be part of a color coding system for easy identification.

Features:

- ▶ PolyEthylene Terephthalate (PET)
- ▶ Good chemical resistance
- ▶ Monofilament size: .010"
- ▶ UV light resistant polyester yarn
- ▶ Easy to install, light weight, and flexible
- ▶ High tensile strength
- ▶ Cut and abrasion resistant
- ▶ Professional look on finished project
- ▶ Retains properties in extreme high and low temperature environments
- ▶ Will not degrade in a variety of fluids and solvents
- ▶ Moisture resistant, prevents rot and fungus (MIL-E-5272)
- ▶ Conforms to FMVSS 302-Automotive Test
- ▶ Allows moisture to dissipate from assembly

Temperature range:
-103°F to 257°F
-40°C to 125°C



PET

SIZE ID	SIZE RANGE		FEET PER SPOOL		PART NUMBER		DESCRIPTION	
NOMINAL SIZE	MIN DIAMETER	MAX DIAMETER	BULK	MINI	BULK SPOOL	MINI SPOOL	COLORS	WEIGHT LBS/100'
1/8"	3/32"	1/4"	1000 ft	225 ft	PT1	CM118	16	.16
1/4"	1/8"	7/16"	1000 ft	200 ft	PT2	CM105	16	.24
3/8"	3/16"	5/8"	500 ft	125 ft	PT2.5	CM117	16	.57
1/2"	1/4"	3/4"	500 ft	100 ft	PT3	CM106	16	.77
5/8"	3/8"	1"	500 ft	100 ft	PT3.5	CM186	Black	.95
3/4"	1/2"	1 1/4"	250 ft	75 ft	PT4	CM107	16	1.20
1 1/4"	3/4"	1 3/4"	250 ft	50 ft	PT6	CM108	16	1.60
1 1/2"	1"	2 1/2"	250 ft	40 ft	PT7	CM119	16	1.96
1 3/4"	1 1/4"	2 3/4"	200 ft	30 ft	PT8	CM120	16	2.70
2"	1 1/2"	3 1/2"	200 ft	50 ft	PT9	CM131	16	3.30
2 1/2"	1 3/4"	4 1/2"	250 ft	50 ft	PT11	CM129	16	3.80
3"	2 1/2"	4 3/4"	250 ft	50 ft	PT4	CM130	16	4.0

▶ FLAME RETARDANT (FR)

Flame Retardant (FR) sleeving is the perfect choice for electronic and high tech applications where flame retardance and durability are key factors. **FR** monofilament has is UL rated VW-1 and FR-1. **FR** sleeving is a light weight, durable, cost-effective method for covering electrical and mechanical wire, cable and hose assemblies.

FR is braided from 0.010" flame retardant polyester yarn. It has a continuous operating temperature from -103°F to 257° F (125°C). The melt temperature is 446° F. The flame resistance rating is VW-1 and FR-1 with the heat deflection temperature of 325° F. For sizes please visit our website.

Features:

- ▶ Flame Retardant PolyEthylene Terephthalate
- ▶ Monofilament size: 0.010"
- ▶ UL rated VW-1 and FR-1
- ▶ F.A.R. Part 25
- ▶ Sensitive Instrument Cabling
- ▶ Flame Retardant (FR) aircraft hose protection
- ▶ Conforms to ASTM and MIL-202
- ▶ Conforms to FMVSS 302-Automotive burn test
- ▶ 3-1 expansion ratio

Temperature range:
-103°F to 257°F



▶ **TEFLON®**

Teflon® expandable sleeving is ideal in applications where flame, chemical and very high temperature resistance are significant considerations. The high temperature properties of **TF** make it the ideal choice for aerospace, military, high-tech plenum applications where thermal stability and low outgassing are critical. **TF** is braided from 0.16" flame resistant PFA monofilament. Available in clear color

Temperature range:
-94°F to 550°F



Features:

- ▶ Teflon® (PFA) Perfluoroalkoxy Polymer, CAS No. 26655-00-5 Fluorinated Ethylene Perfluoroalkyl - Vinyl Ether Copolymer
- ▶ Monofilament size: 0.016"
- ▶ Excellent chemical resistance
- ▶ Chemically inert, thermally stable
- ▶ Low outgassing
- ▶ High UV resistance
- ▶ Oxygen index: 95%
- ▶ Operating Temp. -94°F to 550°F (260°C)
- ▶ Melt Temperature: 310°C/ 590°F
- ▶ Ideal in corrosive environments
- ▶ Retains properties in very extreme high and low temperatures

Teflon®

SIZE ID	SIZE RANGE		FEET PER SPOOL		PART NUMBER		DESCRIPTION	
NOMINAL SIZE	MIN - MAX DIAMETER	BULK	MINI	BULK SPOOL	MINI SPOOL	COLORS - WEIGHT LBS/100'		
1/8"	3/32" 1/4"	1000 ft	225 ft	TF1N	CM155	1	.5	
1/4"	3/16" 3/8"	1000 ft	200 ft	TF2N	CM156	1	.6	
3/8"	1/4" 3/4"	500 ft	125 ft	TF2.5N	CM157	1	2.2	
1/2"	3/8" 7/8"	500 ft	100 ft	TF3N	CM1158	1	2.6	
3/4"	5/8" 1 1/4"	250 ft	75 ft	TF4N	CM159	1	2.9	
1 1/4"	1 1/8" 1 1/2"	200 ft	50 ft	TF6N	CM160	1	4.8	

Teflon® is a registered trademark of the DuPont Corporation.

▶ **HALAR® (HR) EXPANDABLE SLEEVING**

Very Low Outgassing, Self-Extinguishing UL-2024 Plenum Rated Sleeving

Halar® (HR) expandable sleeving is commonly used where flammability, high temperature endurance and low outgassing are concerns. Also referred to as self-extinguishing, **Halar®** is used in plenum rated applications. HR is a cost-effective substitute for Teflon® because it has similar properties.

Halar® is used in aerospace and vital military applications for its high temperature, flame retardant properties and excellent chemical resistance.

HR is braided from 0.011" **Halar®** (E-CTFE) fluoropolymer monofilaments that are self extinguishing with a flame resistant rating of VW-1. Standard colors are black with a single white tracer, and white with a single black tracer.

Temperature range:
-103°F to 320°F



UL 2024 supersedes UL 910 standard for Cable Management products.

Features:

- ▶ **Halar®** (E-CTFE) Ethylene-Chlorotrifluoroethylene copolymer monofilament
- ▶ Continuous operating temperature: 150°C
- ▶ Monofilament size: 0.011"
- ▶ Chemically inert, thermally stable
- ▶ Good electrical properties
- ▶ High chemical, gas and moisture resistance
- ▶ Abrasion and cut resistant
- ▶ Low out-gassing, **Halar®** is a UL registered component for plenum systems
- ▶ Oxygen index: 64%

Halar® (HR)

SIZE ID	SIZE RANGE		FEET PER SPOOL		PART NUMBER		DESCRIPTION	
NOMINAL SIZE	MIN - MAX DIAMETER	BULK	MINI	BULK SPOOL	MINI SPOOL	COLORS - WEIGHT LBS/100'		
1/8"	3/32" 1/4"	1000 ft	225 ft	HT1	CM137	2	.25	
1/4"	1/8" 7/16"	1000 ft	200 ft	HT2	CM138	2	.38	
3/8"	3/16" 5/8"	500 ft	125 ft	HT2.5	CM139	2	.86	
1/2"	1/4" 3/4"	500 ft	100 ft	HT3	CM140	2	1.1	
3/4"	1/2" 1 1/4"	250 ft	75 ft	HT4	CM141	2	1.7	
1 1/4"	3/4" 1 3/4"	250 ft	50 ft	HT6	CM142	2	2.6	
1 3/4"	1 1/4" 2 3/4"	200 ft	30 ft	HT8	CM143	2	4.4	
2"	1 1/2" 3 1/2"	200 ft	50 ft	HT9	CM144	2	4.6	

RYTON (RY) CHEMICAL RESISTANT EXPANDABLE BRAIDED SLEEVING

Ryton (RY) expandable sleeving is used in high temperature, flame resistant wire harness and cable assemblies. RY is an extremely light weight, high temperature resistant and cost effective sleeving for aerospace, military, communication satellite applications.

RY is braided from 0.008" flame resistant PPS monofilament. Standard colors are black and natural.

Temperature range:
-94°F to 392°F



Features:

- ▶ PPS - Polyphenylene Sulphide high temperature thermoplastic monofilament
- ▶ Monofilament size: 0.008"
- ▶ Melt temp: 285°C/ 545°F
- ▶ Temperature range: -70°C to 200°C (-94°F to 392°F)
- ▶ Flame retardant VW-1, long term thermally stable
- ▶ Retains properties despite extremely high temperatures
- ▶ Oxygen index: 46%
- ▶ Extremely lightweight, durable and flexible
- ▶ Easy to install

Ryton

SIZE ID	SIZE RANGE		FEET PER SPOOL		PART NUMBER		DESCRIPTION	
NOMINAL SIZE	MIN	MAX DIAMETER	BULK	MINI	BULK SPOOL	MINI SPOOL	COLORS - WEIGHT LBS/100'	
1/8"	3/32"	1/4"	1000 ft	225 ft	RY 1	CM161	2	.21
1/4"	1/8"	3/8"	1000 ft	200 ft	RY 2	CM162	2	.36
1/2"	1/4"	3/4"	500 ft	100 ft	RY 3	CM163	2	.59
3/4"	1/2"	1 1/4"	250 ft	75 ft	RY4	CM164	2	.75
1 1/4"	3/4"	1 3/4"	250 ft	50 ft	RY 6	CM165	2	1.3
1 3/4"	1 1/4"	2 1/2"	200 ft	50 ft	RY 8	CM166	2	1.6



NOMEX® FIREPROOF BRAIDED SLEEVING

Woven Nomex® clothing and protective gear has been used for years by race car drivers, municipal fire departments and oil rig personnel to provide that extra level of comfort and protection from the dangers that come with working in and around intense flame and heat. Our Nomex® sleeving will do the same for your wires, hoses and cables.

Nomex® will protect your application in temperatures up to 700° F. It is unaffected by short term exposure to most acids, bases, solvents and common engineering chemicals. Despite the soft touch and smooth appearance associated with woven aramid fibers, Nomex® is incredibly strong, with a tensile strength of 90,000 psi. The densely braided sleeving provides full coverage and protection on even the most exposed applications. Nomex® sleeving cuts easily with regular scissors and the smooth surface eases installation even over long wire runs. The construction allows slight expansion to accommodate irregular surfaces and tight turns.

Soft, Pliable Flame Protection to 700° F



Available sizes are 3/8", 1/2" and 5/8". Bulk size 100'. Additional sizes are available by special order.

Features:

- ▶ Cut and abrasion resistant
- ▶ Protects to 700° F
- ▶ Halogen and asbestos free
- ▶ Resists gasoline and engine chemicals
- ▶ Available color is green

Nomex® is a registered trademark of the DuPont Corporation.

FIREFLEX

Silicone jacketed fiberglass sleeving is the choice of professionals in racing and other industries where protection from constant temperatures approaching 500°F is mandatory.

FireFlex fiberglass/silicone sleeving (FI) is engineered to contain radiant exhaust and coolant heat within pipes and hoses and to protect expensive performance equipment and operators from thermal damage.

The thick, high temperature fiberglass sleeve is jacketed with a non-permeable, heavy silicone coating that is flexible enough to follow tight radius curves, resists all automotive chemicals and solvents, and provides a substantial level of abrasion and puncture protection.

FireFlex is completely non-conductive, will not melt, delaminate, become brittle or support combustion under normal conditions, and provides a professional level solution to thermal protection needs in any application.



Available sizes are 3/8", 1/2", 5/8", 3/4", 7/8", 1", 1-1/2", 2", 2-7/8". Bulk sizes are 25', 50', 100' and 200'

**Silicone Jacketed
Fiberglass Resists Heat,
Abrasion & Moisture**

Features:

- ▶ Stable to 500°F
- ▶ Contains radiant heat to prevent damage to nearby components
- ▶ Cut and abrasion resistant
- ▶ Halogen and asbestos free
- ▶ Resists gasoline and engine chemicals
- ▶ Available in 2 thicknesses; Standard (Black) or Extended Range (Red)

F6 FLAME RETARDANT

Flexible, Semi- Rigid Split Sleeving Will Not Support Combustion

Flame spread is a vital safety consideration in applications as diverse as homebuilt aircraft wiring and safely managing sound & lighting cables at clubs, concerts and theaters. To accommodate these issues, and to provide unequaled flexibility and access, we have developed this unique sleeving product.

Self-extinguishing **F6F** fully complies with UL standard VW-1. The addition of a flame inhibitor to our triaxially braided F6 split sleeving provides the perfect solution to a wide range of cable management needs.

Easy slip over installation, complete access along the entire run, economy, durability and UL certified flame retardance make F6F ideal when the goal is to manage wires and cables safely and effectively.

**Temperature range:
75°C to 125°C**



Features:

- ▶ Wraparound Without Fasteners
- ▶ Temp Range -75°C to 125°C
- ▶ Melt Temp 230°C



► **THERMA SHIELD TUBE**



[ThermaShield](#) creates a buffer between your wires, hoses and cables and the high temperature environments they perform in.

[ThermaShield](#) is engineered by laminating an aluminum heat shield to a layer of strong fiberglass insulation. This system provides superior protection from radiant heat by reflecting it away from sensitive electronics, wiring and hoses.

[ThermaShield](#) is available in tube, wrap around and full adhesive backed products to provide the right solution for virtually any installation requirements.



ThermaShield Tube

NOMINAL DIAMETER	BULK PUT-UP	MINI PUT-UP
1/2"	250 ft	100 ft
3/4"	250 ft	100 ft
1"	250 ft	100 ft
1 1/4"	250 ft	100 ft
1 1/2"	250 ft	100 ft
1 3/4"	100 ft	50 ft
2"	100 ft	50 ft
2 1/2"	100 ft	50 ft

Thermashield products will protect delicate components up to 1,200° without delaminating, turning brittle or suffering adhesive failure.

► **THERMA SHIELD WRAP**



When component disassembly isn't an option, [ThermaShield Wrap](#) is the solution. Designed to fit securely around existing assemblies and hard to reach components, the flat material is joined along the edge with a strip of permanent, high temperature adhesive. The aggressive bonding agent will securely adhere along the width of the material, affording maximum protection and allowing a snug fit around odd-shaped connectors and terminations.



ThermaShield Wrap

NOMINAL SIZE	BULK PUT-UP	MINI PUT-UP
1" (3.75" flat)	250 ft	100 ft
1 1/4" (4.5" flat)	200 ft	100 ft
1 1/2" (5.25" flat)	200 ft	100 ft
1 3/4" (6" flat)	100 ft	50 ft
2" (6.5" flat)	100 ft	50 ft
2 1/4" (7.5" flat)	100 ft	50 ft

► **THERMA SHIELD FLAT**



Protect surfaces exposed to extreme heat with [ThermaShield Flat](#). An aluminum laminated fiberglass sheet with a full coating of permanent, high temperature adhesive, this unique product applies directly to any surface. Ideal solution for protecting delicate electronic component boxes mounted close to engines or other heat sources. When applied, the aluminum laminate efficiently reflects heat away and the insulating fiberglass backing protects the fragile contents from thermal damage and failure.



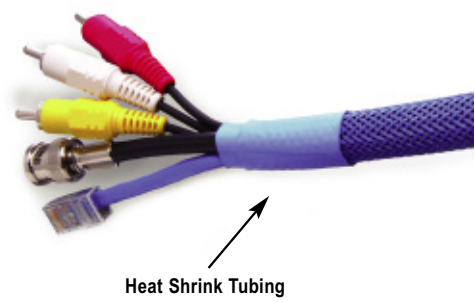
ThermaShield Flat

SHEET WIDTH	BULK PUT-UP	MINI PUT-UP
1"	200 ft	100 ft
2"	200 ft	100 ft
3"	200 ft	100 ft
4"	200 ft	100 ft
5"	200 ft	100 ft
6"	100 ft	50 ft
7"	100 ft	50 ft
8"	100 ft	50 ft

▶ **HEAT SHRINK**

Commonly referred to as [shrink tubing](#), [shrink band](#), or [heat shrink](#), we are proud to stock all varieties of polyolefin, fluoropolymer (PVC, FEP, PTFE, Kynar® PVDF), chlorinated polyolefin (Neoprene®) and highly flexible elastomer (Viton®) heat-shrinkable tubing. Our tubing conforms to all major commercial and military specifications including MIL-I-23053, Underwriters' Laboratory (UL) VW-1 flame test, and CSA.

Our tubing can be used for many different applications, and in various environments from -75°C to 260°C, in a wide variety of chemicals. Materials are available in thin, medium or heavy wall configurations, with melt-and-flow adhesives, weather proofing encapsulants, and more than 15 different colors, including Yellow/Green stripes for ground identification. Whether you want to purchase by the foot or in large economical bulk spools we can accommodate your needs.



▶ **HEAT SHRINK 2:1**

2:1 Heat Shrink Tubing
Professional Grade Flexible Flame Retarded Polyolefin

[TT-100](#) is a high performance, multi purpose polyolefin based, heat shrinkable tubing, with excellent electrical, chemical and physical properties. It is designed for a wide range of applications, including military and commercial, and for the consumer/OEM market requiring Underwriters Laboratories and/or Canadian Standards approval. It is used extensively for cable and wire harnessing, strain relief, insulation, color-coding, identification and protection against fluids.

2:1 Heat Shrink PER FOOT

PART#	NOMINAL SIZE	SIZE AFTER SHRINKING
HS2-3FT	1/8"	.062"
HS2-6FT	1/4"	.125"
HS2-9FT	3/8"	.187"
HS2-13FT	1/2"	.25"
HS2-18FT	3/4"	.375"
HS2-24FT	1"	.5"
HS2-40FT	1-1/2"	.75"

2:1 Heat Shrink PER SPOOL

PART #	NOMINAL SIZE	SIZE AFTER	SHRINKING LENGTH
HS2-2SP100	3/32"	.047"	100'
HS2-3SP50	1/8"	.062"	50'
HS2-6SP50	1/4"	.125"	50'
HS2-9SP50	3/8"	.187"	50'
HS2-13SP50	1/2"	.25"	50'
HS2-18SP50	3/4"	.375"	50'
HS2-24SP50	1"	.5"	50'
HS2-31SP50	1-1/4**	.625"	50' Available in Black only
HS2-40SP50	1-1/2"	.75"	50'

Specification reference:
UL 224 125°C, 600V, VW-1
CSA-C22.2 No. 198-M1986 125°C, 600V
File LR33298 Guide 400-U-9

Adhesive Lined "Dual Wall" Tubing 2:1 Heat Shrink

Our [2:1 heat shrink tubing](#) is also available with a "dual-wall" construction. During application, the inner layer melts and flows, creating an adhesion layer to ensure a snug fit to your harness and/or connector. It is also recommended for applications that require a water-tight seal to protect wire, cable and connector components.

2:1 Dual Wall requires a 100 FT Minimum Purchase. Please Call

2:1 Heat Shrink Tubing Kit

PART #	NOMINAL SIZE	LENGTH	#PCS/KIT
HSKIT	1/16"	4"	56 PCS
HSKIT	3/32"	4"	56 PCS
HSKIT	1/8"	4"	28 PCS
HSKIT	3/16"	4"	18 PCS
HSKIT	1/4"	4"	9 PCS
HSKIT	3/8"	4"	8 PCS



▶ HEAT SHRINK 3:1

3:1 Heat Shrink Tubing Professional Grade Flexible Flame Retarded Polyolefin

Our [3:1 heat shrink tubing](#) is an effective way to professionally finish the ends of a wire harness. The over-expanded product configuration easily fits over the end of a connector, and shrinks down to 33% of its original diameter to fit snugly over the wires. With our wide assortment of bright colors, now you can attractively color coordinate the ends of our expandable braided sleeving. Our tubing is available in rolls or by the foot.

Our 3:1 heat shrink tubing is also available with a “dual-wall” construction from 3/8” to 1-1/2”



Available in Black, Gray, Clear, White, Red, Orange, Yellow, Green, Blue, Purple

3:1 Heat Shrink PER FOOT

PART#	NOMINAL SIZE	SIZE AFTER SHRINKING
HS3-9FT	3/8"	1/8"
HS3-13FT	1/2"	5/30"
HS3-18FT	3/4"	1/4"
HS3-24FT	1"	3/8"
HS3-40FT	1 1/2"	1/2"

3:1 Heat Shrink PER SPOOL

BEFORE SHRINKING	AFTER SHRINKING	PART#	FT.	PART#	SPOOL
3/8"	1/8"	HS3-9FT30	30'	HS3-9SP50	50'
1/2"	5/30"	HS3-13FT30	30'	HS3-13SP50	50'
3/4"	1/4"	HS3-18FT30	30'	HS3-18SP50	50'
1"	3/8"	HS3-24FT20	20'	HS3-24SP50	50'
1 1/2"	1/2"	HS3-40FT10	10'	HS3-40SP50	50'

Specification reference:

MIL-I-23053/5 Class 1 and Class 3. MIL-R-46846, Type V
UL 224 125°C, 600 V, VW-1 File E48762 YDPU2

Adhesive Lined Tubing 3:1 Heat Shrink

Our [3:1 heat shrink tubing](#) is also available with a “dual-wall” construction. During application, the inner layer melts and flows, creating an adhesion layer to ensure a snug fit to your harness and/or connector. It is also recommended for applications that require a water-tight seal to protect wire, cable and connector components.

Available in Black only

Dual Wall 3:1 Heat Shrink PER FOOT

PART#	NOMINAL SIZE	SIZE AFTER SHRINKING
HS3-A9FT	3/8"	1/8"
HS3-A13FT	1/2"	5/30"
HS3-A18FT	3/4"	1/4"
HS3-A24FT	1"	3/8"
HS3-A40FT	1 1/2"	1/2"

Dual Wall 3:1 Heat Shrink PER 4 FOOT PIECES

PART#	BEFORE SHRINKING	AFTER SHRINKING	LENGTH
HS3A-9FT4	3/8"	1/8"	4'
HS3A-13FT4	1/2"	5/30"	4'
HS3A-18FT4	3/4"	1/4"	4'
HS3A-24FT4	1"	3/8"	4'
HS3A-40FT4	1 1/2"	1/2"	4'

▶ 4:1 HEAT SHRINK TUBING

Over-expanded Flexible Flame Retardant Polyolefin Tubing

Our [4:1 over-expanded flexible](#), flame retardant heat shrinkable polyolefin tubing is used for special circumstances such as jacket retrofitting or repair and electrical insulation of wire assemblies with oversize components or connectors.

The over-expanded product configuration easily fits over the end of a connector, and shrinks down to 25% of its original diameter to fit snugly over the wires. Our tubing is available in 4 foot sections or by the single foot. Available in Black only.

Our [4:1 heat shrink tubing is also available with a "dual-wall" construction](#). During application, the inner layer melts and flows, creating an adhesion layer to ensure a snug fit to your harness and/or connector. It is also recommended for applications that require a water-tight seal to protect wire, cable and connector components.

4:1 Heat Shrink

NOMINAL ID	MIN. ID BEFORE SHRINKING	MAX. ID AFTER SHRINKING	MIN. WALL AFTER SHRINKING	PART# 4 FT. PIECE	PART# BY THE FOOT
1/2"	0.470"	0.118"	0.043"	HS4-050-FT4	HS4-050-FT
3/4"	0.75"	0.188"	0.051"	HS4-075-FT4	HS4-075-FT
1"	0.945"	0.236"	0.059"	HS4-100-FT4	HS4-100-FT
1-1/2"	1.50"	0.374"	0.059"	HS4-150-FT4	HS4-150-FT

Normally our policy is to supply continuous lengths. If it is absolutely necessary to receive one continuous length, please specify.

▶ 4:1 HEAT SHRINK TUBING - ADHESIVE LINED TUBING (DUAL WALL)

Our [4:1 heat shrink tubing is also available with a "dual-wall" construction](#). During application, the inner layer melts and flows, creating an adhesion layer to ensure a snug fit to your harness and/or connector. It is also recommended for applications that require a water-tight seal to protect wire, cable and connector components.

Dual Wall 4:1 Heat Shrink Tubing

NOMINAL ID	MIN. ID BEFORE SHRINKING	MAX. ID AFTER SHRINKING	MIN. WALL AFTER SHRINKING	PART# 4 FT. PIECE
3/16"	0.1575"	0.039"	0.0354"	HS4A-0188-FT4
5/16"	0.3150"	0.079"	0.0354"	HS4A-0313-FT4
1/2"	0.4724"	0.118"	0.0512"	HS4A-050-FT4
3/4"	0.6300"	0.157"	0.0630"	HS4A-075-FT4
1"	0.9449"	0.236"	0.0827"	HS4A-100-FT4
1-1/4"	1.2598"	0.315"	0.0906"	HS4A-125-FT4

*Please Note: Our Diameters for Heat Shrink Tubing are measured as ROUND TUBE, NOT FLAT

▶ FLUORINATED ETHYLENE-PROPYLENE (FEP) HEAT SHRINK TUBING

Fluorinated Ethylene-Propylene (FEP) Heat Shrink Tubing

FEP heat shrink tubing is a common alternative to PTFE, with similar electrical and friction properties and chemical resistance. **FEP** heat shrinkable tubing conforms to Mil-I-23053/11, and UL 94 (V0, VW-1), and is suitable for continuous use at temperatures up to 204°C.

FEP heat shrink tubing is used in cases where temperatures are not as extreme, and very high shrink ratios are not necessary. It is also widely used when components cannot handle the extreme shrink temperature of PTFE. It is available in 1.6:1 and 1.3:1 varieties, shrinks at around 190-210°C, and has found widespread use and appeal.

1.3:1 Heat Shrink available from 4AWG to 1-1/2". 1.6:1 Heat Shrink available from 3/32" to 2".



For FEP Technical Specifications please visit our website.

Features:

- ▶ Continuous operating temperature 400°F (204°C)
- ▶ Outstanding chemical resistance in extreme environments
- ▶ FDA and USP Class VI approved
- ▶ Lower gas permeability than PTFE
- ▶ Flame Rating: UL94 V0 and VW-1
- ▶ Limiting oxygen index greater than 95
- ▶ Gamma, ETP, e-beam and autoclave sterilizable
- ▶ Mil Spec approved (23053/11)

APPLICABLE SPECIFICATION: MIL-I-23053/11
PACKAGING STANDARD LENGTHS, 4 foot Straight to Best Effort
Other lengths quoted upon request

COLOR SUPPLIED IN NATURAL UNLESS OTHERWISE SPECIFIED.
MIL. STD. 104 COLORS AVAILABLE ON REQUEST

CUT PIECES: QUOTED ON REQUEST

UL File # E64007
CSA File # 082582



▶ CONDUCTIVE HEAT SHRINK CONNECTORS

EMC shrink Mate connectors use Mil Standard R-46846 polyolefin tubing and a highly conductive Polymer Thick Film silver inner diameter coating. The coating shrinks with a heat gun, oven, or any other conventional heat source. When the tubing is set, the inner conductive layer provides an electrical connection between the outside surface of the objects that are joined by the tubing. Coaxial cable butt joints and cable to shielded connector housing joints can be made fast and easy and without the use of solder.

Electrical connections are possible with EMC shrink Mate connectors between components of various sizes and shapes, and between solderable and nonsolderable surfaces, such as stamped metal, plated finishes, and shielding paints.



Features:

- ▶ Fast and easy connections
- ▶ Ideal for splicing coaxial cables
- ▶ Forms cable to shielded housing connections
- ▶ Eliminates soldering

Specifications

Sizes Available:

- ▶ Diameters of 1/8, 1/4, 3/8, 1/2, 3/4, 1, 1 1/4, 1 1/2, and 2 inch
- ▶ 1 foot to 3 feet in length
- ▶ Other sizes available upon special request

Materials Available: Multi-purpose Polyolefin
Operating Temperature: -55° C to +135° C
Longitudinal Shrink: 2%
Shrink Ratio: 2:1 (diameter)
Dielectric Strength: 600 volts/mil
Processing Temperature: 120°C

Conductivity:

The resistance of a shrunken tube is approximately 1 ohm per inch. The resistance of any splice is determined by the gap between two objects being spliced. A 0.1 inch gap will have 0.1 ohm resistance.

Outgassing:

Passes the Aerospace Industry General Specification Vacuum Stability Requirements of Polymeric Material for Spacecraft Application for Mass Loss and Collected Volatile Condensable Materials per ASTM E-595, NASA Sp-R-002A and ESA PSS-01-702.

▶ POLYVINYLIDENE FLUORIDE (PVDF, KYNAR®) HEAT SHRINK TUBING

Polyvinylidene Fluoride (PVDF, Kynar®) Heat Shrink Tubing

[PVDF heat shrink tubing](#) is used in applications where continuous operating temperatures are 150-175°C.

It is used where outstanding abrasion and cut-through resistance are required. We carry two types of PVDF tubing, which conform to either MIL-DTL-23053/18 Class 2 or MIL-DTL-23053/8.

[PVDF](#) is available in flexible (150°C) and semi-rigid (175°C) forms, in a 2:1 shrink ratio.



Heat Shrink

Features:

- ▶ Continuous operating temperature 302°F (150°C or 175°C)
- ▶ Superior chemical and aging resistance
- ▶ UV and gamma ray stable
- ▶ Flame rating: UL94 V0 and VW-1
- ▶ Lowest coefficient of friction available besides PTFE
- ▶ Flexible PVDF has MIL-DTL-23053/18 Class 2 approval
- ▶ Semi-Rigid PVDF has MIL-DTL-23053/8 approval
- ▶ Available color is Clear. For Black, please call.

2:1 Semi-Rigid PVDF

PART #	NOMINAL SIZE	SIZE AFTER SHRINKING	SPOOL QUANTITY
HSKY2-0094-SP	3/32"	0.05"	500'
HSKY2-0125-SP	1/8"	0.06"	500'
HSKY2-0188-SP	3/16"	0.09"	250'
HSKY2-025-SP	1/4"	0.13"	250'
HSKY2-0375-SP	3/8"	0.19"	200'
HSKY2-050-SP	1/2"	0.25"	200'
HSKY2-075-SP	3/4"	0.38"	100'
HSKY2-100-SP	1"	0.50"	100'

2:1 Flexible PVDF

PART #	NOMINAL SIZE	SIZE AFTER SHRINKING	SPOOL QUANTITY
HSPVDF2-0094-SP	3/32"	0.05"	500'
HSPVDF2-0125-SP	1/8"	0.06"	500'
HSPVDF2-0188-SP	3/16"	0.09"	250'
HSPVDF2-025-SP	1/4"	0.13"	250'
HSPVDF2-0375-SP	3/8"	0.19"	200'
HSPVDF2-050-SP	1/2"	0.25"	200'
HSPVDF2-075-SP	3/4"	0.38"	100'
HSPVDF2-100-SP	1"	0.50"	100'

Flexible PVDF Technical Specifications

2:1 Semi-Rigid PVDF Dimensions

Minimum Shrink Temperature: 150 °C

SIZE	EXPANDED		RECOVERED			
	Internal Diam. Min. (D)		Internal Diam. Max. (d)		Min. Total Wall Thickness (t)	
	In.	mm	In.	mm	In.	mm
3/64"	0.047	1.2	0.023	0.58	0.007	0.180
1/16"	0.063	1.6	0.031	0.79	0.007	0.180
3/32"	0.094	2.4	0.046	1.17	0.010	0.250
1/8"	0.125	3.2	0.062	1.57	0.010	0.250
3/16"	0.188	4.8	0.093	2.36	0.010	0.250
1/4"	0.251	6.4	0.125	3.18	0.010	0.250
3/8"	0.377	9.6	0.187	4.75	0.011	0.279
1/2"	0.503	12.8	0.250	6.35	0.011	0.279
3/4"	0.759	19.3	0.375	9.53	0.014	0.356
1"	1.000	25.6	0.500	12.7	0.016	0.406

2:1 Flexible PVDF Dimensions

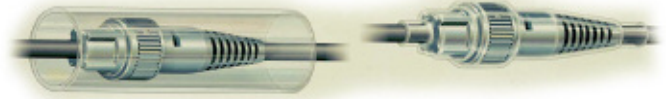
Minimum Shrink Temperature: 125°C

SIZE	EXPANDED		RECOVERED			
	Internal Diam. Min. (D)		Internal Diam. Max. (d)		Min. Wall Thickness (t)	
	In.	mm	In.	mm	In.	mm
3/64"	0.047	1.2	0.023	0.58	0.008	0.203
1/16"	0.063	1.6	0.031	0.79	0.008	0.203
3/32"	0.094	2.4	0.046	1.17	0.009	0.229
1/8"	0.125	3.2	0.062	1.57	0.009	0.229
3/16"	0.188	4.8	0.093	2.36	0.009	0.229
1/4"	0.251	6.4	0.125	3.18	0.011	0.279
3/8"	0.377	9.6	0.187	4.75	0.011	0.279
1/2"	0.503	12.8	0.250	6.35	0.011	0.279
3/4"	0.759	19.3	0.375	9.53	0.014	0.356
1"	1.000	25.6	0.500	12.7	0.016	0.406

▶ POLYTETRAFLUOROETHYLENE (PTFE) HEAT SHRINK TUBING

When chemical resistance and high temperature resistance are necessary, our [high temperature fluoropolymer heat shrinks](#) are the perfect solution. They protect cables, tubes and other objects. The products conform to both military and commercial standards, and in most cases exceed those standards.

Fluoropolymers offer increased lubricity for easy sliding, and low moisture absorption for enhanced dimensional stability. Three materials are readily available: PTFE (Polytetrafluoroethylene), FEP (Fluorinated Ethylene Propylene) and PVDF (Polyvinylidene Fluoride, Tradename Kynar®).



Polytetrafluoroethylene (PTFE) Heat Shrink Tubing

[PTFE heat shrink tubing](#) is available in 2:1 and 4:1 shrink ratios, and is widely used in military applications (MIL-I-23053/12) because of its high continuous use temperature (250°C) and outstanding chemical resistance.

[PTFE heat shrink tubing](#) is the most difficult of the three fluoropolymer materials to shrink due to its extremely high shrinking temperature (325-340°C). You can use a heat gun or welding torch to shrink **PTFE**, but these methods have a tendency to cause the material to overheat in small areas, while under-heating other areas, causing uneven shrinking and potential burning of the material. The most reliable method for shrinking **PTFE** is the use of a controlled temperature oven; however this is impractical with large harnesses or temperature sensitive components.

PTFE heat shrink tubing is available in a 2:1 shrink ratio and 4:1. The 2:1 is available in up to four different wall thicknesses.

Please note: when ordering our 2:1 PTFE Heat Shrink, ORDER AS SIZE AFTER SHRINKING. Available color is Natural

For PTFE Technical Specifications please visit our website

Features:

- ▶ Continuous operating temperature -454°F to 500°F (-270°C to 260°C)
- ▶ Outstanding resistance to almost any chemical known
- ▶ FDA and USP Class VI approved
- ▶ Very low coefficient of friction
- ▶ Good dielectric strength
- ▶ Flame rating UL94 V0 and VW-1
- ▶ Limiting Oxygen Index greater than 95
- ▶ ETO and autoclave sterilizable
- ▶ Mil spec approved (23052/12)

PTFE 2:1 Standard Wall Heat Shrink

PART #	NOMINAL SIZE	SIZE AFTER SHRINKING	RECOVERED WALL THICKNESS
HSPTFE2-0125-FT	1/8"	0.13"	0.022"
HSPTFE2-025-FT	1/4"	0.26"	0.020"
HSPTFE2-0313-FT	5/16"	0.33"	0.020"
HSPTFE2-0375-FT	3/8"	0.30"	0.025"
HSPTFE2-0438-FT	7/16"	0.46"	0.025"
HSPTFE2-050-FT	1/2"	0.52"	0.025"
HSPTFE2-0625-FT	5/8"	0.66"	0.030"
HSPTFE2-075-FT	3/4"	0.79"	0.035"
HSPTFE2-0875-FT	7/8"	0.91"	0.035"
HSPTFE2-100-FT	1"	1.04"	0.035"

CUSTOM SPECIFICATIONS AND TOLERANCES UPON REQUEST *MIL-I-23053/12
TW=AMS 3586
SW=AMS 3586

Four-foot sticks of Heat Shrink tubing are standard packaging lengths. Shorter or longer lengths are available upon request. Extremely long continuous lengths are sometimes available depending on specifications. Inquire for feasibility and pricing. UL File # E64007 / CSA File # 082582

Notes on shrinking PTFE:

1. Always assure good ventilation in the immediate work area prior to beginning the heat shrink process. Fumes may cause nausea and dizziness.
2. It is imperative that the tubing be heated uniformly until it becomes clear (gel state). This transition from crystalline to amorphous must take place, since shrinkage will only occur during recovery from the gel state (re-crystallizing).
3. When using a mandrel to shrink the tubing, it is important to pre-heat the mandrel to assure even and uniform shrinkage.
4. If the tubing begins to crack, chances are you overheated the material.
5. Also, higher shrink ratios will require higher shrink temperatures.

PTFE 4:1 Heat Shrink

PART #	NOMINAL SIZE	SIZE AFTER SHRINKING
HSPTFE4-0125-FT	1/8"	0.037"
HSPTFE4-025-FT	1/4"	0.063"
HSPTFE4-0313-FT	5/16"	0.078"
HSPTFE4-0375-FT	3/8"	0.096"
HSPTFE4-4375-FT	7/16"	0.112"
HSPTFE4-050-FT	1/2"	0.144"
HSPTFE4-0625-FT	5/8"	0.178"
HSPTFE4-075-FT	3/4"	0.224"
HSPTFE4-0875-FT	7/8"	0.244"
HSPTFE4-100-FT	1"	0.278"
HSPTFE4-150-FT	1-1/2"	0.400"
HSPTFE4-200-FT	2"	0.520"
HSPTFE4-250-FT	2-1/2"	0.650"
HSPTFE4-300-FT	3"	0.775"
HSPTFE4-400-FT	4"	1.025"



▶ HEAT SHRINK TUBING MANUFACTURER CROSS REFERENCE

PTFE 2:1 Standard Wall Heat Shrink

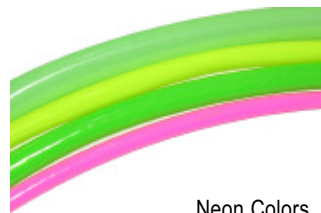
	PN Prefix	MIL-I-23053	UL-224 Op. Temp. (°C)	Min. Shrink Temp. (°C)	Sumitomo	Alpha	Raychem	3M	Canusa
2:1 Std. wall	HS2-	/5 Class 1	135	120	B2	FIT-22	RNF-100	FP301	CPX-100
2:1 Clear	HS2-	/5 Class 2	135	120	A2	FIT-221-2	RNF-100-2	FP301-2	CPX-100
2:1 Thin wall	HS2TW-	/5 Class 1	135	120	F4	-	-	-	-
3:1 Std. wall	HS3-	/5 Class 1	135	120	B2(3X)	FIT-321V	RNF-3000	N/A	CPX-300
4:1 Std. wall	HS4-	/5 Class 1	135	120	B2(4X)	FIT-421	RP-4800	N/A	N/A
2:1 Low shrink	HS2LS-	/5 Class 3	125	90	B2	FIT-221V	V-4	N/A	CPX-876
2:1 Dual wall	HS2A-	/4 Class 2	125	90	O2B2	FIT-750	TAT-125	EPS-200	N/A
3:1 Dual wall	HS3A-	/4 Class 3	135	90	W3B2	FIT-321	ATUM	EPS-300	CPA-100
4:1 Dual wall	HS4A	/4 Class 3	110	90	W3B2(4X)	N/A	ATUM 4X	-	N/A
3:1 Dual wall Semi-rigid	HS3E-	/4 Class 1	110	120	W5DL	FIT-300	SCL	MW	CPA-300
Semi rigid Polyefin	HS2SR-	/6	135	135	B8 or D(clear)	FIT-295	CRN	SR-350	CHM-140
Chlorinated Elastomer (Neoprene)	HSNEO-	/1	120	135	R-10	FIT-600	NT-FR	NST	CNP-200
Diesel resistant	HSDR-	/16	120	130	R120	FIT-601	NT	NST	N/A
Kynar™ Semi-rigid PVDF	HSKY2-	/8	175	150-175	K	FIT-350	RNF-150	RW-175 KYNAR	DERAY KY175
Flex PVDF	HSPVDF-	/18 Class 2	150	125-150	K2	N/A	RT-375	N/A	N/A
FEP	HSFEP	/11	204	190	FEP	FIT-400	FEP	FEP	-
PTFE	HSPTFE	/12	250	350	TFE	FIT-500	TFE	TFE	CTFE-250
Viton®	HSVIT-	/13	220	175	FE3	FIT-650	VITON	VTN200	DERAYVT220
PVC	HSPVC2-	/2	105	110	V	FIT-105	V	PVC	VN-105

▶ UV REACTIVE AND GLOW IN THE DARK HEAT SHRINK

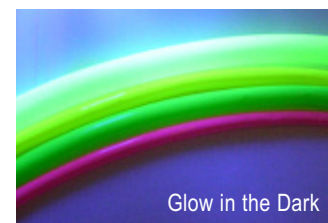
Looking for UV reactive or glow in the dark heat shrink? We now stock [PVC heat shrink](#), in bright highly UV reactive neon colors. It is available in a 2:1 shrink ratio, and three sizes (1/4", 3/8", 1/2"). Colors currently available are Luminous, Neon Pink, Neon Yellow, Neon Green, Luminous Green, and Gold. Not UV reactive.

Features:

- ▶ Low shrink temperature
- ▶ Highly flame retardant
- ▶ Resists most chemicals and oils
- ▶ Resists sunlight, moisture and fungus
- ▶ UL/CSA approved. MIL-I-23053/2 Class 2



Neon Colors



Glow in the Dark

UV Reactive and Glow in the Dark Heat Shrink

PART #	NOMINAL SIZE BEFORE SHRINKING	COLOR	WEIGHT (LBS.)
HSPVC2-025FT	1/4 in.	Luminous, Neon Pink	.013
HSPVC2-0375FT	3/8 in.	Neon Pink, Neon Yellow	.019
HSPVC2-050FT	1/2 in.	Neon Green, Neon Yellow, Gold, Luminous Green	.022

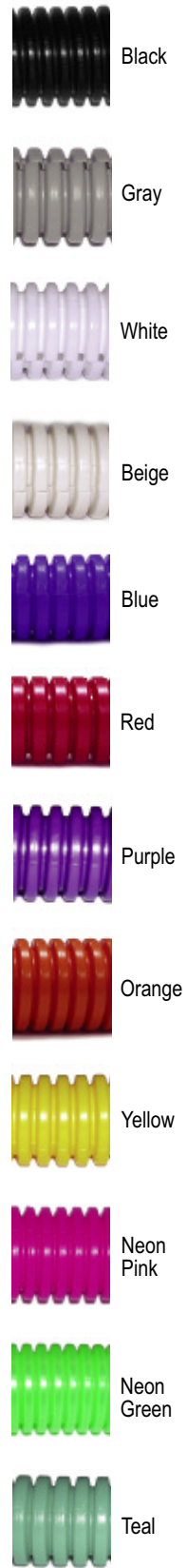
► **WIRE LOOM**

CableOrganizer.com exclusive! We are now carrying 2" diameter wire loom in white

The [Flex Tubing](#) Cable Organizer is a plastic (polyethylene) corrugated split tubing. It is manufactured in different sizes ranging from 1/4" i.d. (6mm) to 2" (50mm). Our tubing offers excellent protection for wiring harnesses, cables, tubing and hoses. It is very light in weight, has excellent flexibility and provides protection from abrasion, puncture, vibration and friction. It also protects against heat (up to 200 degrees °F.), sunlight, water, snow, ice, salt, and automotive fluids. Split loom corrugated tubing is ideal for wrapping up your cables and organizing them into a neat package. Instead of having multiple tangled wires and cables, you are left with one neat and orderly cable bundle.

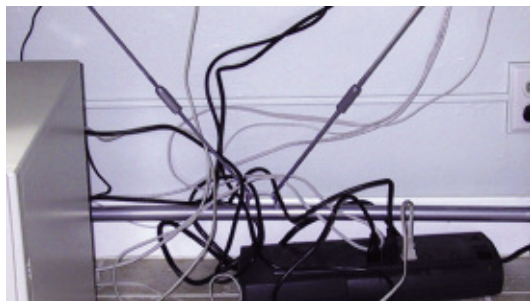
High Quality Corrugated Wire Loom The WHD-410 Cable Organizer is a 1" plastic corrugated split tubing that is 10' long. Because of it's length, it is very economical and can be cut into two or more shorter lengths. The WHD-410 comes with 6 nylon beaded wire ties to further help you manage your cables and wiring.

Comes in black or white. The black tubing works especially well with today's stereo and audio components. For computer systems with multiple wires and home theaters, this is a very practical solution. The white convoluted tubing (WHD-310G) works well with small offices and other home uses. It blends in well with white or light walls.



Wire Looms

SIZE	DESCRIPTION	WEIGHT IN LBS.	COLOR
1/4" x 20'	Wire Loom	0.32	Black, White, Gray, Teal, Blue, Red, Yellow, Neon Pink, Neon Green, Purple, Orange
3/8" x 20'	Wire Loom	0.375	Black, White, Gray, Teal, Blue, Red, Yellow, Neon Pink, Neon Green, Purple, Orange
1/2" x 8'	Wire Loom	0.16	Black, White, Gray, Beige
1/2" x 20'	Wire Loom	0.5	Black, White, Gray, Teal, Blue, Red, Yellow, Neon Pink, Neon Green, Purple, Orange, Beige
5/8" x 15'	Wire Loom	0.5	Black, White, Gray, Teal, Blue, Red, Yellow, Neon Pink, Neon Green, Purple, Orange
3/4" x 5'	Cable Tamer + 4 ties and labels	0.6	Clear
3/4" x 6'	Wire Loom	0.25	Black, White, Gray, Beige
3/4" x 10'	HOSA High Quality Wire Loom	0.5625	Black, White
3/4" x 15'	Wire Loom	0.625	Black, White, Gray, Teal, Blue, Red, Yellow, Neon Pink, Neon Green, Purple, Orange, Beige
1" x 5'	Wire Loom	0.32	Black, White, Gray, Beige
1" x 10'	Wire Loom	0.69	Black, White, Gray, Beige, Teal, Blue, Red, Yellow, Neon Pink, Neon Green, Purple, Orange, Beige
1" x 10'	HOSA High Quality Wire Loom	0.625	Black
1" x 50'	Wire Loom Special	5	Beige, Gray
1-1/2" x 10'	Wire Loom	1.25	Black, White
2" X 10'	Wire Loom	2	Black, White



Before



After with White 1" X 5' Wire Loom

Wire Loom Tees/ T-Connector

Wire Loom T-connectors secure odd-angled tubing and wires. They are widely used in automotive, construction, and industry.

Wire Loom Tee size corresponds to inner diameter of wire loom.



3/4" x 1/4" x 3/4" Tee with 3/4" blue, 1/4" yellow & 3/4" neon green wire loom

▶ **BULK WIRE LOOM - SPLIT FLEX TUBING**

Bulk packaging is ideal for bigger jobs. The [Flex Tubing](#) Cable Organizer is a plastic (polyethylene) corrugated split tubing. It is manufactured in different sizes ranging from 1/4" (6mm) to 2" (50mm). Our tubing offers excellent protection for wiring harnesses, cables, tubing and hoses. It is very light in weight, has excellent flexibility and provides protection from abrasion, puncture, vibration and friction. It also protects against heat (up to 200° F.), sunlight, water, snow, ice, salt, and automotive fluids. Use it with our cable wraps or cable ties on each end to further help you manage your cables and wiring.

[Split loom corrugated tubing](#) is ideal for wrapping up your cables and organizing them into a neat package. Split tubing is designed to install easily on any assembly and the slit closes to complete the installation. Instead of having multiple tangled wires and cables, you are left with one neat and orderly cable bundle.

Split Flex Tubing

TUBING SIZE	LENGTH	PE COLOR	NYLON
1/4"	100'	Red, White, Blue, Orange, Neon Green, Neon Pink, Purple, Teal	Black
3/8"	100'	Red, White, Blue, Orange, Gray, Purple, Beige	Black
1/2"	100'	Red, White, Blue, Yellow, Orange, Gray, Neon Green, Beige	Black
5/8"	100'	Red, White	Black
3/4" *	100'	Red, White, Blue, Beige, Gray, Orange, Yellow	Black
1"	100'	Red, White, Blue, Gray, Beige, Yellow	Black
1 1/4"	50'	Call for minimum	Black
1 1/2"	50'	White	Black
2"	50'	White	Black
2 1/2"	50'	Call for minimum	Call for minimum
3 1/2"	50'	Call for minimum	Call for minimum



Box

TUBING SIZE	BOX QUANTITY	COLOR	NYLON BOX QTY (BLACK ONLY)
1/4"	3,200'	Red, White, Blue	3,200'
3/8"	1,900'	Red, White, Blue	2,000'
1/2"	1,100'	Red, White, Blue, Yellow	n/a
1/2"	1,200'	Red, White, Blue, Yellow	1,500'
1/2"	1,500'	Red, White, Blue, Yellow	1,500'
5/8"	800'	White	900'
3/4"	550'	Red, White, Blue, Yellow	n/a
3/4"	600'	Red, White, Blue, Beige, Yellow	600'
1"	300'	Blue, Red, Yellow	n/a
1"	350'	Red, White, Blue, Gray, Yellow, Beige	350'
1 1/4"	250'	Call for Minimum	n/a
1 1/4"	300'	Call for Minimum	300'
1 1/2"	150'	White	n/a
1 1/2"	200'	White	200'
2"	100'	White	100'
2 1/2 "	100'	Call for Minimum	n/a
3 1/2 "	100'	Call for Minimum	n/a



▶ FLEXIBLE NYLON CONVOLUTED WIRE LOOM

[Flexible Nylon Convolute Wire Loom](#)

Our tubing offers excellent protection for wire harnesses, tubing, hose and cable. It is lightweight, very flexible and provides abrasion protection, crush resistance and is easy to install over wires.

CableOrganizer.com now offers automotive grade flexible convoluted tubing. Manufactured from impact modified, heat stabilized Nylon 6; this material offers temperature resistance suitable for automobile engines, and the flexibility to get around tight curves without the slit opening up.

The use of an impact modifier increases the strength of the tubing, while making it almost as flexible as Polyethylene. The modifier also allows this material to be supplied without plasticizers.

The use of a heat stabilizer allows the material to handle almost any temperature seen under the hood of a car. Its continuous use temperature is 125°C (257°F), which is based on a 3000 hour continuous temperature heat age; so tubing near an engine in a car traveling at 60mph for 3000 hours would be driven 180,000 miles before the tubing sees any sign of degradation.

**Temperature range:
125°C (257°F)**

Benefits:

- ▶ Meets Ford ESB-M4D423-A2, ESF-M4D423-A, ESF-M4D426-A specifications
- ▶ Meets Chrysler MS DB 41, CPN 2785
- ▶ Meets GM GMP.PA6.003
- ▶ Meets Delphi Packard M-2170 and M1889
- ▶ 125°C temperature rating
- ▶ No plasticizers

SIZE	PART #	LENGTH	PART #	LENGTH
1/4"	BFTNY025-3200FT	3200'	BFTNY025-100FT	100'
3/8"	BFTNY0375-1800FT	1800'	BFTNY0375-100FT	100'
1/2"	BFTNY050-1200FT	1200'	BFTNY050-100FT	100'
5/8"	BFTNY0625-900FT	900'	BFTNY0625-100FT	100'
3/4"	BFTNY075-600FT	600'	BFTNY075-100FT	100'
1"	BFTNY100-350FT	350'	BFTNY100-100FT	100'
1-1/4"	BFTNY125-300FT	300'	BFTNY125-50FT	50'
1-1/2"	BFTNY150-200FT	200'	BFTNY150-50FT	50'
2"	BFTNY200-100FT	100'	BFTNY200-50FT	50'

▶ FLAME RETARDANT POLYPROPYLENE (PP) WIRE LOOM

[Flame Retardant Polypropylene \(PP\) Wire Loom](#)

Our tubing offers excellent protection for wire harnesses, tubing, hose and cable. It is lightweight, very flexible and provides abrasion protection, crush resistance and is easy to install over wires.

**Temperature range:
-40°F to 275°F**

Polypropylene is used when higher temperature resistance is required and PE doesn't offer enough resistance. In addition, a flame retardant additive is present which allows the material to pass the UL 94 V2 flame test. In applications where the covering is required to be "self-extinguishing", flame retardant PP split loom is a better alternative than Nylon. Product is readily available in bulk boxes and 50-100 foot lengths. Available in black.

SIZE	PART #	LENGTH	PART #	LENGTH
1/4"	BFTFR025-3200FT	3200'	BFTFR025-100FT	100'
3/8"	BFTFR0375-1800FT	1800'	BFTFR0375-100FT	100'
1/2"	BFTFR050-1200FT	1200'	BFTFR050-100FT	100'
5/8"	BFTFR0625-900FT	900'	BFTFR0625-100FT	100'
3/4"	BFTFR075-600FT	600'	BFTFR075-100FT	100'
1"	BFTFR100-350FT	350'	BFTFR100-100FT	100'
1-1/4"	BFTFR125-300FT	300'	BFTFR125-50FT	50'
1-1/2"	BFTFR150-200FT	200'	BFTFR150-50FT	50'
2"	BFTFR200-100FT	100'	BFTFR200-50FT	50'



▶ POLYTETRAFLUOROETHYLENE (PTFE) CONVOLUTED TUBING

Our tubing offers excellent protection for wire harnesses, tubing, hose and cable. It is lightweight, very flexible and provides excellent abrasion protection.

CableOrganizer.com now offers [military specification flexible convoluted tubing](#). Manufactured from a variety of materials, our tubing can be used in a wide variety of environments, and is produced to Mil Specs MIL-T-81914/ variants 1-6 in both standard and extra flexible. Extra flexible convoluted tubing is achieved by manufacturing tubing with a greater number of convolutions per inch. These extra convolutions allow the material to flex without kinking around tighter bend diameters.



Polytetrafluoroethylene (PTFE) Convoluted Tubing

SIZE	STANDARD FLEX		EXTRA FLEX	
	PART #	WEIGHT PER FT	PART #	WEIGHT PER FT
3/16"	WLPTFE-0188	.02	WLPTFE-0188	.022
1/4"	WLPTFE-025	.029	WLPTFE-025	.038
5/16"	WLPTFE-0313	.036	WLPTFE-0313	.048
3/8"	WLPTFE-0375	.042	WLPTFE-0375	.056
7/16"	WLPTFE-0438	.049	WLPTFE-0438	.065
1/2"	WLPTFE-050	.052	WLPTFE-050	.069
5/8"	WLPTFE-0625	.069	WLPTFE-0625	.092
3/4"	WLPTFE-075	.104	WLPTFE-075	.138
7/8"	WLPTFE-088	.113	WLPTFE-088	.15
1"	WLPTFE-100	.126	WLPTFE-100	.168
1-1/4"	WLPTFE-125	.155	WLPTFE-125	.196
1-1/2"	WLPTFE-150	.217	WLPTFE-150	.26

Temperature range:
- 454°F to 500°F (-270°C to 260°C)

Features:

- ▶ Outstanding resistance to almost any chemical known (exceptions: alkali metals in molten state, fluorine gas at high temperatures, chlorine trifluoride).
- ▶ Very low coefficient of friction
- ▶ Good dielectric strength
- ▶ UL 94 V0 Flame rated
- ▶ Does not support combustion
- ▶ Limiting Oxygen Index greater than 95
- ▶ MIL-T-81914 rated (/1 for standard flex, and /2 for extra flexible)
- ▶ FDA and USP Class VI approved material
- ▶ ETO and autoclave sterilizable

▶ OPTICAL FIBER/ COMMUNICATION CABLE RACEWAYS

Plenum Convoluted Raceway

A raceway marked "Plenum" is suitable for use in ducts, plenums or other spaces used for environmental air when used to enclose optical fiber cables marked OFNP or communications cable marked CMP or CMP-OF. This raceway exhibits a maximum peak optical density of 0.5, a maximum average optical density of 0.15, and a maximum flame spread distance of 5 feet when tested in accordance with the Test for Flame Propagation and Smoke-Density Values (Plenum) in UL 2024.



Riser Convoluted Raceway

A raceway marked "Riser" is suitable for installation in risers when used to enclose optical fiber cable marked OFNP and OFNR or communications cable marked CMP, CMP-OF, CMR or CMR-OF. This raceway has fire resistant characteristics capable of preventing the carrying of fire from floor to floor. This raceway exhibits flame-propagation height of less than 12 feet and a temperature of less than 850 deg. F. at the 12 foot point when tested in accordance with the Test For Flame Propagation (Riser) in UL 2024.



For sizes and pricing, please visit our website or contact us at: 866-222-0030

► ENCLOSURE RACK 400 SERIES

[Quest's 400 series enclosures](#) are available in a variety of heights and colors and are designed for mounting Telecommunications, Datacommunications, Security, Broadcast and other 19" electronic equipment. Quest enclosures are manufactured to ANSI/EIA RS310-D Standards.

All 400 series enclosures feature louvered side and rear removable and keyed panels for increased air-flow and ventilation.

These enclosures come complete with dual fans, 4 (2 front, 2 rear) adjustable mounting rails tapped with EIA spaced #12-24 threading, casters, leveling feet, ground bus and lockable acrylic front door. Shipped fully assembled.

SPECIFICATIONS AND FEATURES:

Floor Equipment Enclosure With Removable Panel

Construction

- ▶ Structure: Cold Rolled Steel - 16 AWG
- ▶ Side and Rear Panels: Cold Rolled Steel, 18 AWG (3, 4 & 5 ft. Heights), 16 AWG (6 & 7 ft. Heights)
- ▶ Base: Cold Rolled Steel - 14 AWG
- ▶ Rails: Laminated Steel - 16 AWG
- ▶ Front Door: Smoked Acrylic -with ventilated steel frame



FLOOR ENCLOSURES 400 Series 19"x24"

PART#	U/RMS	OVERALL HEIGHT	OVERALL WIDTH	DEPTH	INTERNAL HEIGHT	INTERNAL DEPTH	WEIGHT	FORMAT
QFE4019-20	20	3'	22.5"	24"	35"	21.5"	128 lbs	19"
QFE4019-28	28	4'	22.5"	24"	47"	21.5"	159.50 lbs	19"
QFE4019-34	34	5'	22.5"	24"	59.5"	21.5"	204 lbs	19"
QFE4019-40	40	6'	22.5"	24"	70"	21.5"	227.04 lbs	19"
QFE4019-45	45	7'	22.5"	24"	78.5"	21.5"	250.36 lbs	19"

► WALL MOUNT ENCLOSURES

The [Compact 100 series](#) wall-mount enclosures offers the installers an economical solution to 19" wall-mount applications. Made from 1-piece construction, this series provides a cost-effective solution for mounting electronic equipment and components. For 19" Rack-mount equipment.

The [Compact 200 series](#) wall-mount features removable side panels for easy access to equipment and wiring and are key-locked for secure access. Available in various sizes and colors. For 19" rack-mount equipment.

The [Compact 300 series](#) wall cabinets feature a swing-out design which provides access to component rear panels. The rear support mounting section is made with 16 AWG steel which permits cabinet to be opened without sagging, even fully loaded. #12-24 tapped internal mounting rails are included. For 19" rack-mount equipment.

For specifications, features and more sizes please visit our website



Compact 100 Series

Construction:

- ▶ Structure: One-Piece Construction
- ▶ Rails: Laminated Steel- 16 AWG
- ▶ Panels: Laminated Steel- 20 AWG
- ▶ Front Door: Smoked Acrylic Door, Steel Frame With Key Lock

Finish:

- ▶ Paint: Electrostatic Microfinish
- ▶ Colors: Ivory or Black

Wall Mount Enclosures - Compact 100 Series

PART#	U/RMS	HEIGHT	WIDTH	DEPTH	WEIGHT
QWM1019-05	5	11"	20.5"	20"	28.16 lbs
QWM1019-07	7	15"	20.5"	20"	31.24 lbs
QWM1019-09	9	18"	20.5"	20"	35.20 lbs
QWM1019-11	11	22"	20.5"	20"	38.50 lbs

▶ OUTDOOR ENCLOSURES

Cableorganizer.com is proud to offer the highest quality [Outside Plant Cabinets](#) at a very competitive price. These cabinets are manufactured in the United States by a technically superior and responsive company with a 20 year history in [Outside Plant Enclosures](#). These products may be used in any application where the included components must be protected from the outside environment.



- ▶ Application for telecom electronics are:
DLC, DSLAMs, Fiber distribution, Crossconnect; and for non-telecom applications, these cabinets may be used to house any electronics where environmental protection is required.
- ▶ These cabinets are designed to meet all applicable Outside Plant Industry requirements
- ▶ Designed to NEMA 3R and NEMA 4 Standards
- ▶ **At no additional cost we will provide technical support for configuration ordering requirements and if required, we will assist with installation.**

Standard equipment includes 19" mounting racks, environmental and environmental seals, cable entry boots and grounding hardware and one front facing entry door with lockable latches. Cabinets can be customized for all Outside Plant applications - special engineering and additional equipment integration also available. Additional cabinet sizes are available. Call for information and pricing.

Features:

- ▶ Manufactured with .100" Aluminum for superior corrosion resistance
- ▶ Painted with durable light beige powder coat for attractive appearance in harsh environments
- ▶ Double roof construction for protection from solar heat
- ▶ Lifting eyelets for ease of installation
- ▶ Craft friendly cabinet providing ease of access for equipment integration
- ▶ Technical field support to assist with installation
- ▶ Proven track record of outstanding customer satisfaction
- ▶ Delivery interval on cabinets and required optional equipment is 2 weeks. Contact us for intervals of cabinets with Heat Exchanger or Air Conditioner option
- ▶ Satisfaction guaranteed
- ▶ One year warranty on all SPC TelEquip materials and labor

Outdoor Enclosures

PART#	CABINET MODEL	RACK SPACE	SIZE	WEIGHT	COOLING OPTIONS <small>See Optional Equipment</small>	MOUNTING OPTIONS
QOE-10600-06U-18	TP60	10.5"	26"H x 22"W x 18"D	60 lbs	FF	Pole, Wall
QOE-10500-10U-18	10U-18	17.5"	26"H x 32"W x 18"D	95 lbs	HX, AC, FF	Pad, Pole, Wall
QOE-10500-13U-18	13U-18	22.75"	32"H x 32"W x 18"D	105 lbs	HX, AC, FF	Pad, Pole, Wall
QOE-10500-17U-18	17U-18	29.75"	38"H x 32"W x 18"D	115 lbs	HX, AC, FF	Pad, Pole, Wall
QOE-10500-23U-24	23U-24	40.25"	50"H x 32"W x 24"D	145 lbs	HX, AC, FF	Pad, Pole, Wall

Optional Equipment

PART#	OPTION
QOE-10500-S	Pad Mounting collar, adds 6" in total height
QOE-10500-P	Vented Battery Pedestal, adds 14.5" in total height
QOE-10500-PM	Pole Mounting Bracket
QOE-10500-VW	Wall Mounting Bracket
QOE-10500-SO	Swing Out Rack
QOE-10500-FF	Fan/ Filter-external air (FF)
QOE-10500-HX	Heat Exchanger (HX) Call for size determination & pricing
QOE-10500-AC	Air Conditioner (AC)

- * Installed at no additional charge into cabinets above, as required, or ordered separately for field installation.
- * Equipment rack widths are normally 19", but racks can be 23" if preferred at the same low price.
- * If swing out rack is needed, the available rack space will be reduced by 1 inch.

▶ FLOOR RACKS

[Computer Server Racks and Cabinets](#)

Providing only the best quality equipment and wire management products designed for mounting communications equipment and hardware. The 19" format open frame floor racks are available in 3, 4 and 7 foot heights and in natural aluminum or black electrostatic powder coat finish. All racks are provided with all assembly hardware and equipment mounting screws. The rails are tapped #12-24 front and rear in EIA compliant spacing. They are designed with mounting holes which allow anchoring to the floor.

Features:

- ▶ "U" shaped rails 3" x 3/16" tapped both front and rear with EIA compliant RMS spacing
- ▶ Complete with assembly hardware and set of #12-24 tapped equipment screws.
- ▶ Meets or exceeds EIA-310D standards.
- ▶ Base with perforated holes for floor anchoring
- ▶ Easy to assemble.
- ▶ Laminated Steel 14 AWG Mounting Brackets
- ▶ **Colors: Aluminum or Black**

Floor Racks 500 Series

PART#	U/RMS	HEIGHT	WIDTH	WEIGHT
QFR1903-20	20	3'	19"	19.14 lbs
QFR1904-28	28	4'	19"	21.12 lbs
QFR1907-45	45	7'	19"	28.60 lbs



▶ CABLE COVE™ TWO-POST RACK

The [Kendall Howard Cable Cove 2-Post Rack](#) is a great inexpensive way to mount components. These open racks are excellent for wire cabinets, telephonic devices, and general network components.

Made from US steel, each rack post has a generous 4 inch internal cove for cable routing. Side panels have routing holes and ganging holes to mount multiple units together. Rails have universal mounting holes that are compatible with virtually every cage nut size available on the market today. These racks can be freestanding or bolted to the floor (floor mount hardware not included).

Features

- ▶ 41U rack
- ▶ .90 gauge steel
- ▶ 19" EIA compliant
- ▶ 4" built-in cable management channels (coves)
- ▶ Ships flat in 1 box
- ▶ 15 minutes to assemble
- ▶ # Load Capacity 1200 lbs
- ▶ Made in the USA



▶ FIBER OPTIC PATCH CORDS

Our [fiber optic patch cable jumpers](#) assemblies are U.S. manufactured in an ISO 9001:2000 certified factory using only the highest quality components. Each fiber optic patch cable jumper is fully tested, to Telcordia standards, for insertion loss and back reflection prior to shipment. Single mode fiber optic cable types are also tested for APEX, radius and undercut. Each fiber optic patch cable is packaged in a sealed plastic bag with cleaning instructions. Our quality assemblies provide the solution for such protocols as Ethernet, Fibre Channel, Infiniband, ATM and Internet Protocol.



SC-SC | SC-ST | SC-LC | SC-FC
ST-ST | ST-SC | ST-LC | ST-FC
LC-LC | LC-SC | LC-ST | LC-FC

Custom colors and lengths available upon request.

- [Fiber Optic Patch Cords - Singlemode](#)
- [Fiber Optic Patch Cords - Multimode \(62.5/125um\)](#)
- [Fiber Optic Patch Cords - Multimode \(50/125um\)](#)
- [Fiber Optic Testers](#)

▶ CAT5E JACKS, RJ45 COUPLER, FACEPLATES

Our line of [Category 5E RJ45](#) 8 conductor keystone jacks meet or exceed TIA/EIA 568A requirements and can be used with our entire line of multi-outlet face plates or can be installed on Blank patch panels for added versatility. They are available in 8 different colors and are universally wired for either 568A or 568B wiring configurations.



Features:

- ▶ 50u" Gold Plated Contacts
- ▶ 568A or 568B Universal Wiring
- ▶ UL Listed
- ▶ Available in 8 colors (Black, Blue, Red, Orange, Yellow, Green, Ivory and White)

Our [CAT 5 In-Line Coupler RJ45](#) 8 Contact allows cabling to be lengthened without compromising signal integrity. PC Board Construction.



[Category 5E Patch Cables](#)

Our enhanced Category 5 UTP patch cords feature a snagless molded strain-relief boot design. They exceed specified performance as stated in TIA/EIA 568A for connecting hardware, manufactured with 50u" gold plated modular connectors and are offered in 7 colors for easy port or link identification lifetime warranted.



[Panduit Cat5e Jacks and Faceplates](#)

Panduit Cat 5e connection jacks forward motion termination allows for quick and simple installation and places no impact on critical internal components creating maximum reliability. Panduit Cat 5e jacks utilize enhanced Giga-TX technology to optimize performance by eliminating conductor untwisting and is identified by the red termination cap.

Panduit Cat5e Jacks Features:

- ▶ Exceeds TIA/EIA-568-B.2 Category 5e and ISO11801 Class D Standard.
- ▶ Forward motion termination allows for quick and simple installation.
- ▶ Utilized Enhanced Giga-TX technology that optimizes performance.

Panduit Faceplates Features:

- ▶ Accept Mini-Com Modules for STP and UTP, Fiber Optic and Audio/Video
- ▶ Includes label/label covers for easy port identification
- ▶ Raised rail design for aesthetic appeal



Cat5e Jacks



[Panduit Mini Faceplate](#)
1 Module, 2 Module,
4 Module, 6 Module

▶ **UL1565 ("PLENUM") MILLE-TIE**

Protects CAT & Fibre, Reduces Waste, Improves Safety

Mille-Tie is an advanced cable management tool that is based upon the concept of a multi-purpose waste-free tie strip. It uses a unique chain-like design that contains numerous apertures, each of which is actually narrower than the Mille-Tie itself. Yet magically the Mille-Tie slips easily through any aperture you choose!

Moulded from a custom polymer, the [UL1565 rated Mille-Tie](#) is designed for use as a wire positioning device in air handling spaces. (Also known as "Plenum" areas.)

The UL1565 ("Plenum") Mille-Tie is ideal for the management of modern data cabling systems in confined areas where health & safety regulations stipulate the use of UL1565 and rated products

Max Rec Temp : - 20°C to +60°C (28°F to 140°F)

Max Loop Strength : >100N (22lbs)

Flammability : UL94 class HB

USA : Section 300.22 (C) and (D) of the National Electric Code.

Canada : Rules 12-010 (3), (4) & (5), & 12-20, Canadian Electrical Code*

Also conforms to UL 2043 Smoke & Heat Release Test and UL94HB flammability. All UL1565 ("Plenum") Mille-Ties are marked on the tongue with a round UL logo. Mille-Ties not bearing this mark are not UL1565 rated.



Mille-Tie Won't Crush Your Cables



▶ **LOW-SMOKE-ZERO-HALOGEN MILLE-TIES**

LSOH Mille-Ties are recommended for all indoor structured cabling uses.

Using unmodified high-grade polymers, natural Mille-Ties are rated as a [low smoke and halogen free](#) component.

Length : 305mm (12in)

Width : 9.0mm (0.35")

Thickness : 1.0mm (0.04")

Max Rec Temp : - 20°C to +60°C (28°F to 140°F)

Max Loop Strength : >100N (22lb)

Flammability : UL94 class HB

Low Smoke : BS 6853 : 1999 Apx D Clause D 8.3

Zero Halogen : IEC 754-1: 1994



▶ **VELCRO® BRAND ONE-WRAP® FLAME RETARDANT WIRE WRAP**

The [VELCRO ONE-WRAP® Strap 889](#) is a flame retardant version of ONE-WRAP® technology, made of polypropylene (FR) hook laminated to an FR treated nylon loop. This product meets acceptance as a Wire Positioning Device (16SA) in air handling spaces, in accordance with Section 300-22 paragraph (c) and (d) of the NEC. This allows for ONE-WRAP® Straps 889 to be used for wire or network cable management above a hung ceiling or below a raised floor.

Effective Cable Network Management

The **Velcro ONE-WRAP®** is ideal for network installations, electrical cord and network cable management control. These high quality wire-wrap posts allow for easy and effective cable network management. Network cable management is essential to a safe and fully functional work environment. Our products are perfect for home, school or office use.

VELCRO® brand ONE-WRAP® Flame Retardant Wire Wrap

PART#	COLOR	SIZE	PUT OUT
VWOWFR-1PK-CY	Cranberry (Flame Retardant)	3/4"x8"	5/PK
VWOWFR-900RL	Cranberry (Flame Retardant)	3/4"x8"	900/ROLL



Ordering Information

You can order Online, by Phone or Fax

Select your preferred payment method (please note that if you select the Business or Personal Check options, we will patiently wait for a check before we ship your merchandise).

We require a minimum purchase of \$200.00 for Purchase Orders Requirements because of the extra time and money involved in checking your credit history and references. Purchase Orders must be faxed along with credit and bank references for approval to: (954) 489-3014. No Purchase Orders will be processed without prior approval of our accounting department. There will be no exceptions.

- ▶ It is important for Credit Card purchases that the name on the card and billing address match. Middle initials must also be included or your purchase will be declined by the credit card company.

- ▶ If you need to make any changes to your order, please do not hesitate to call us. We're here to help.

We accept Visa / Mastercard / Discover and American Express.

Ordering Online is completely secure.

CableOrganizer.com uses the latest security technology - a Digital ID and the Secure Sockets Layer (SSL) protocol. We have our own SSL certificate for security. Our digital ID features today's strongest cryptographic techniques to ensure your information isn't tampered with. With our use of SSL, shoppers are assured that no unauthorized entity has access to their information. The powerful combination of these two technologies protects sensitive information such as an account information and credit card numbers against eavesdroppers.

NOTE: We never rent or sell our customers' data to anyone. All information held is strictly confidential.

We will ship your order as soon as the check is cleared. We reserve the right to change this policy at any time without notice.

Due to our shipping from different warehouses throughout the country, you may receive separate packages.

US Postal Service may not be available when shipping outside the continental U.S.

100% Satisfaction Guaranteed Return Policy

*If after you purchase any product** from CableOrganizer.com, at any time within 90 days, you feel that, for any reason, it fails to live up to your expectations, return it to us and we will immediately and cheerfully refund you 100% of the purchase price*.*

- ▶ You will be responsible for shipping costs
- ▶ For drop ship orders, a 25% restocking fee or more (depending on the condition of the product) per unused item applies on all bulk items, all cord, cable and hose protectors, whether heavy or light duty materials.

** Note: This guarantee excludes all cable protectors (HD-5, GP-5, GP-1, Bumble Bees, Yellows Jackets, Rubber Ducts, Wiremolds, Flexiducts, etc...and all their respective accessories) that have been used and that are in unresalable condition, because the manufacturer and distributors are unable to control and ensure proper use of the materials. Manufacturer and distributors expressly disclaim any and all warranties not set forth herein, including any warranty of fitness for a particular purpose and/or warranty of merchantability which might otherwise be applicable. In the event of a manufacturing defect, buyer's remedy shall be strictly limited to refund of the purchase price or replacement. Buyer specifically acknowledges waiver of any claim against either manufacturer or distributor regarding consequential damages to person or property, damages for loss of use, lost time, lost wages, lost income, loss or profit, or other incidental or consequential damages. Manufacturer and/or distributor reserve the right to make specification and price changes without prior notice or subsequent obligation.

If your shipment contains a defective product or we sent you the wrong product:

- ▶ Return the defective item and we will replace it at no cost to you.
- ▶ Items must be in the original packaging, in as-new condition with the packaging slip, all warranty cards, and accessories (if applicable).
- ▶ Please allow approximately 5 business days for your return to be processed once it has arrived at the warehouse.

* Generators and Accessories are Non-Cancelable, Non-Returnable *

Exchanges:

Ordered the wrong size or color? If you request a replacement, we will ship it after we receive and process your returned product. If you need a replacement right away, we suggest you request a credit (rather than a replacement), when you obtain your RMA number. Then, place a new order. The new order will be shipped as soon as we have the product available and a credit will be applied approximately 7 days after we receive the product(s) you are returning in their original condition within 90 days. Damaged items will not be refunded if they are in unresalable conditions. We recommend you insure your package.

**Note: Due to the nature of the materials, all braided sleeving products as well as all wire loom products sold by the foot will not be refunded if they are cut up in sections of 10 FT or shorter. We will solely exchange those items that are minimum 10 FT long.

***Unfortunately we can not guarantee any package sent without a tracking number. This includes packages sent USPS to an international or overseas destination. To insure replacement if a product does not reach its destination, you must use UPS.

All returns must include a Return Merchandise Authorization Number (RMA#)



Ordering Information

ORDER ONLINE 24/7

cableorganizer.com

CALL US AT

(866) 222-0030 (Toll Free)

(954) 861-2000 (Local)

(954) 861-2001 (Fax)

EMAIL US AT

Please send e-mail to sales@cableorganizer.com

HOURS

CableOrganizer.com is open from 9:00 a.m. to 6:00 p.m. EST
Monday through Friday.

CableOrganizer.com, Inc. - USA

5610 NW 12th Ave, Suite 214

Fort Lauderdale, FL 33309

(866) 222-0030 (Toll Free)

(954) 861-2000 (Local)

(954) 861-2001 (Fax)

email: sales@cableorganizer.com

CableOrganizer.fr - FRANCE

11 Rue du clos Courtel

CS 30817

35708 Rennes Cedex

Tél: (33) 02 99 23 63 82

Fax: (33) 02 23 25 02 72

email: jeanclaudeg@cableorganizer.com

Cage Code: 3CN02

GSA Contract: GS-07F-0723N

Woman Owned Business