

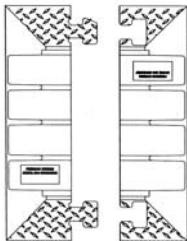
BUMBLE BEE[®] GM

GENERAL MANUFACTURING

ACCESSORIES

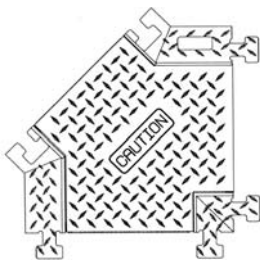


BB4-300 GM



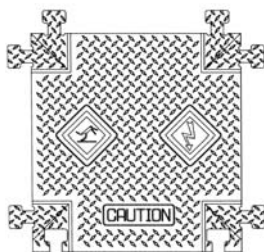
End Boots

End boots reduce trip hazards by covering the exposed connectors and providing a smooth even end to the cable protectors. End boots attach to the exposed ends of the cable protectors at each end of the cable run.



Y Intersections

Y Intersections split a single cable run into two runs. All cables in the original and “split” runs will be completely enclosed. Y Intersections connect directly to the ends of the cable protectors.



X Intersections

X Intersections permit 2 opposing cable runs to meet and continue on or split a single cable run into 3 directions while enclosing all of the cables in all runs.

Drawings are representational and are not necessarily to scale.